



Rizzetta & Company

Waters Edge Community Development District

**Board of Supervisor's Regular
Meeting
June 25, 2026**

**District Office:
5844 Old Pasco Road, Suite 100
Wesley Chapel, Florida 33544
813.994.1001**

www.watersedgecdd.org

WATERS EDGE COMMUNITY DEVELOPMENT DISTRICT

The Waters Edge Clubhouse
9019 Creedmoor Lane, New Port Richey, FL 34654

www.watersedgecdd.org

Board of Supervisors	Ken Smith George Anastasopoulos Gabriel Papadopoulos Craig Pettitt Danny Knoblock	Chairman Vice Chairman Assistant Secretary Assistant Secretary Assistant Secretary
District Manager	Lisa Castoria	Rizzetta & Company, Inc.
District Counsel	Cari Webster	Straley Robin & Vericker
District Engineer	Frank Nolte	Stantec

All cellular phones must be placed on mute while in the meeting room.

The Audience Comment portion of the agenda is where individuals may make comments on matters that concern the District. Individuals are limited to a total of three (3) minutes to make comments during this time.

Pursuant to provisions of the Americans with Disabilities Act, any person requiring special accommodations to participate in this meeting / hearing / workshop is asked to advise the District Office at least forty-eight (48) hours before the meeting / hearing / workshop by contacting the District Manager at (813) 994-1001. If you are hearing or speech impaired, please contact the Florida Relay Service by dialing 7-1-1, or 1-800-955-8771 (TTY) 1-800-955-8770 (Voice), who can aid you in contacting the District Office.

A person who decides to appeal any decision made at the meeting/hearing/workshop with respect to any matter considered at the meeting/hearing/workshop is advised that person will need a record of the proceedings and that accordingly, the person may need to ensure that a verbatim record of the proceedings is made including the testimony and evidence upon which the appeal is to be based.

WATER'S EDGE COMMUNITY DEVELOPMENT DISTRICT

District Office · Wesley Chapel, Florida · (813) 994-1001
Mailing Address – 3434 Colwell Avenue, Suite 200, Tampa, Florida 33614
www.watersedgecdd.org

**Board of Supervisors
Water's Edge Community
Development District**

6/18/2026

FINAL AGENDA

Dear Board Members:

The regular meeting of the Board of Supervisors of the Water's Edge Community Development District will be held on **Thursday, June 25, 2026, at 5:00 p.m. at the Water's Edge Clubhouse, located at 9019 Creedmoor Lane, New Port Richey, FL 34654**. The following is the agenda for this meeting.

BOS MEETING

1. **CALL TO ORDER/ROLL CALL**
2. **AUDIENCE COMMENTS ON AGENDA ITEMS**
3. **STAFF REPORTS**
 - A. Aquatics Manager Monthly Report Tab 1
 - B. Irrigation Report
 - C. District Engineer
 1. Update on Dumping at 10940 Oyster Bay Circle
 - D. PSA Landscape Inspection Reports..... Tab 2
 - E. District Counsel
 - F. District Manager Report Tab 3
4. **BUSINESS ITEMS**
 - A. Consideration of Belle Haven Landscape Lighting Proposals .. Tab 4
 - B. Ratification of Stantec Storm Pipe Jet-Vac Proposal Tab 5
 - C. Ratification of Pasco County Hydrant Meter Request..... Tab 6
 - D. Review of Grau & Associate Audit Response Letter FY 24-25..... Tab 7
 - E. Discussion on Educational Workshop on Irrigation for Residents
5. **BUSINESS ADMINISTRATION**
 - A. Consideration of Minutes of the Board of Supervisors' Regular Meeting held on May 28, 2026..... Tab 8
 - B. Consideration of Operations and Maintenance Expenditures for May 2026..... Tab 9
6. **AUDIENCE COMMENTS AND SUPERVISOR REQUESTS**
7. **ADJOURNMENT**

We look forward to seeing you at the meeting. In the meantime, if you have any questions, please do not hesitate to call us at (813) 994-1001.

Sincerely,
Lisa Castoria
District Manager

Tab 1



MONTHLY REPORT

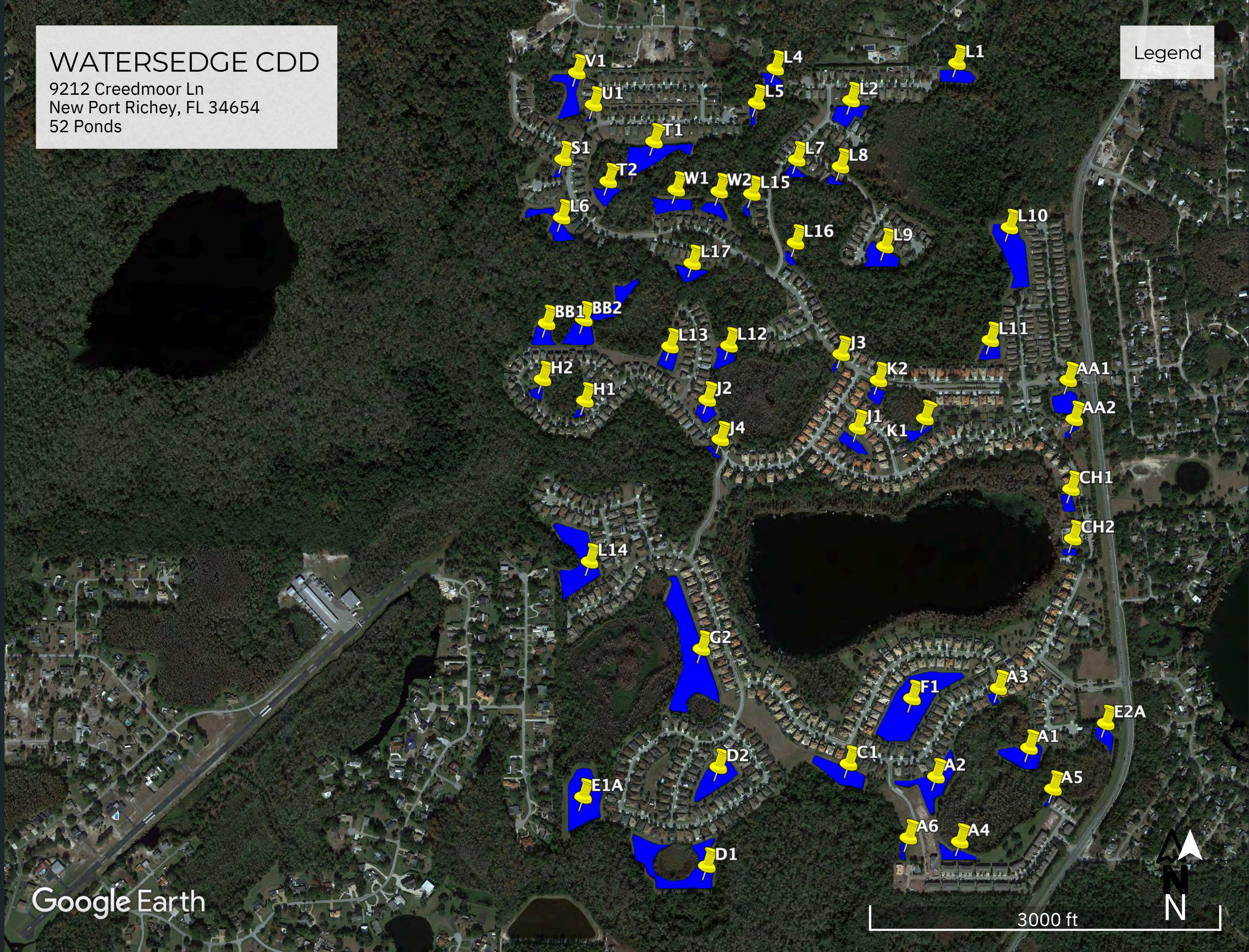
JUNE, 2026



WATERSEDGE CDD

9212 Creedmoor Ln
New Port Richey, FL 34654
52 Ponds

Legend



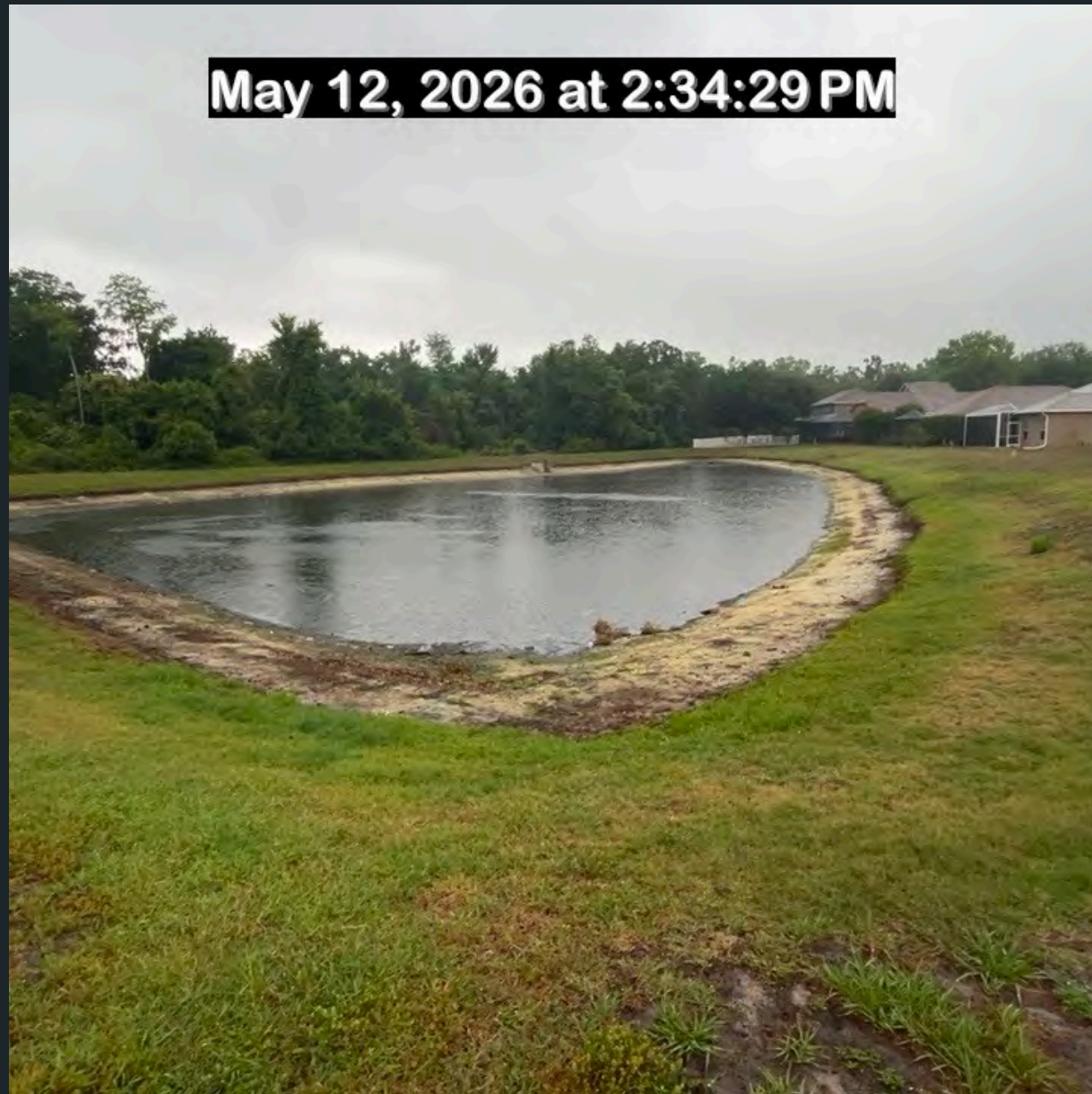
SUMMARY:

We are still in an extreme drought but hopeful we get some heavy rain coming. As the rain starts couple things to expect are a jump in Algae blooms as runoff water is typically nutrient rich and will spark a bloom. Trash that has been stuck in storm water drains will be washed out into open water and there will be a risk of fish loss on heavy rainfall as ponds may turnover. This is natural but unpleasant.

These are a few things to be aware of but the rain is needed and welcome.



Pond #W2 Treated for Shoreline Vegetation.



Pond #L14 Treated for Algae and Shoreline Vegetation.



Pond #L15 Treated for Algae and Shoreline Vegetation.



Pond #L5 Treated for Shoreline Vegetation.



Pond #G2 Treated for Shoreline Vegetation.



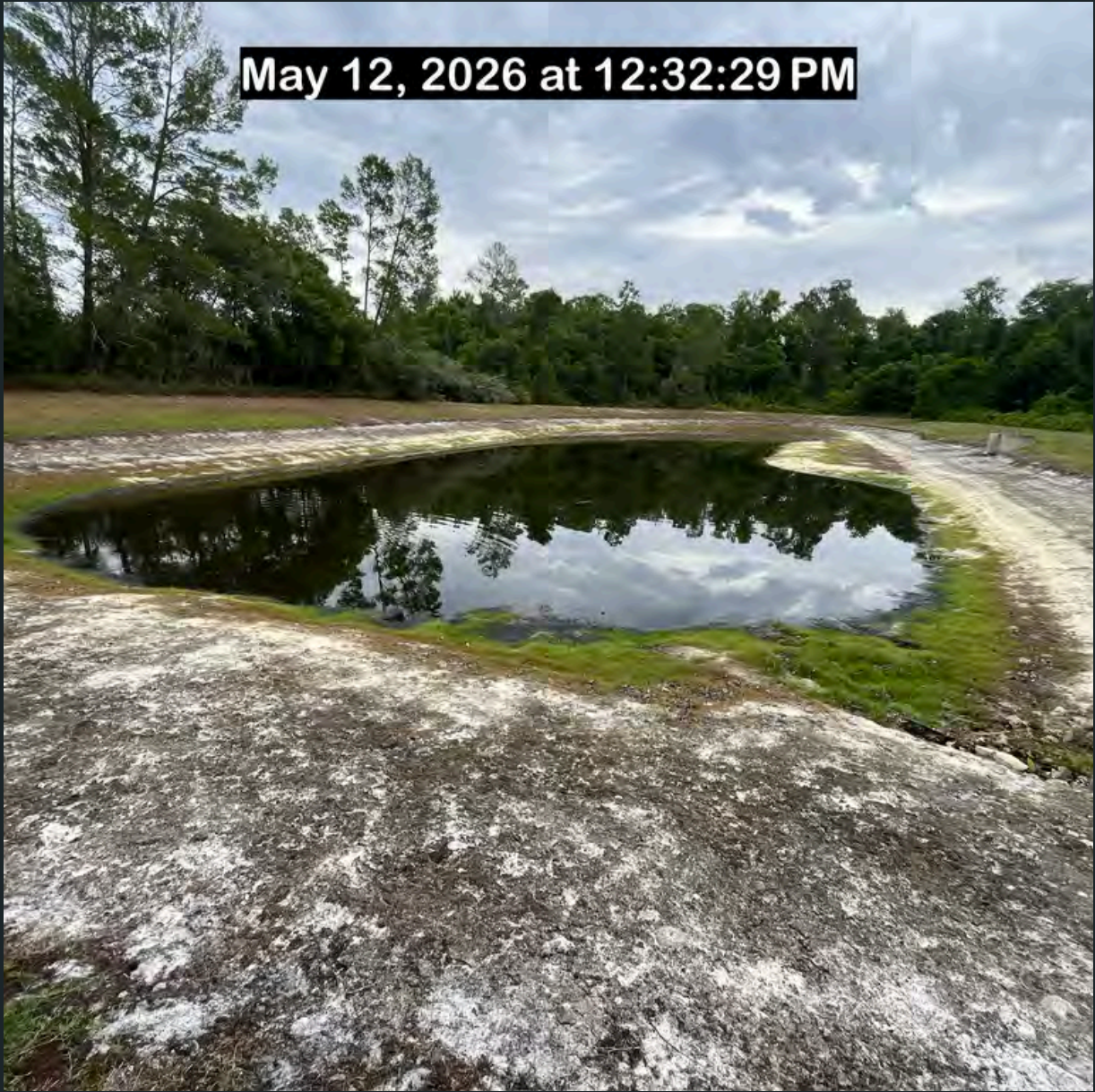
Pond #A6 Treated for Algae and Shoreline Vegetation.



Pond #L4 Treated for Shoreline Vegetation.



Pond #L6 Treated for Shoreline Vegetation.



Pond #L1 Treated for Shoreline Vegetation.

May 12, 2026 at 10:32:58 AM



May 12, 2026 at 11:11:28 AM



May 12, 2026 at 10:26:22 AM

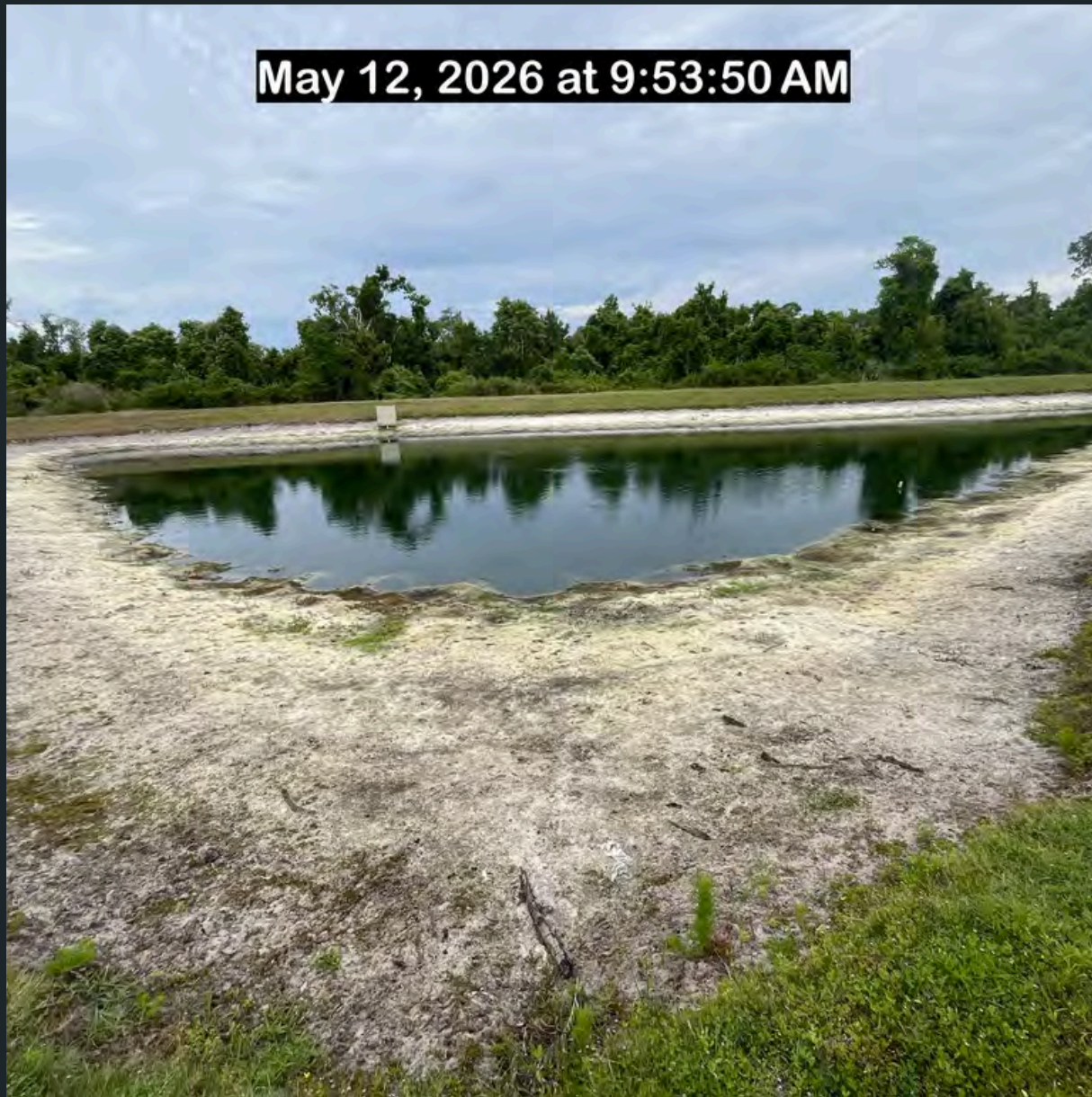


Pond #L9 Treated for algae and Shoreline Vegetation.

Pond #C1 Treated for Shoreline Vegetation.

Pond #L2 Treated for Shoreline Vegetation.

May 12, 2026 at 9:53:50 AM



Pond #L11 Treated for Shoreline Vegetation.

May 12, 2026 at 10:17:34 AM



Pond #J1 Treated for Algae and Shoreline Vegetation.

May 12, 2026 at 10:05:30 AM



Pond #K1 Treated for Algae and Shoreline Vegetation.

AA1: Was treated for Algae and shoreline vegetation.

AA2: Was treated for shoreline vegetation.

CH1: Was treated for Algae and shoreline vegetation.

CH2: Was treated for Algae and shoreline vegetation.

A1: Was treated for shoreline vegetation.

A2: Was treated for shoreline vegetation.

A3: Was treated for Algae and shoreline vegetation.

A4: Was treated for shoreline vegetation.

A5: Was treated for shoreline vegetation.

A6: Was treated for shoreline vegetation.

E1A: Was treated for shoreline vegetation.

F1: Was treated for Algae and shoreline vegetation.

C1: Was treated for and shoreline vegetation.

D1: Was treated for algae and shoreline vegetation.

D2: Was treated for shoreline vegetation.

E1A: Was treated for Algae and shoreline vegetation.

G2: Was treated for shoreline vegetation.

L1: Was treated for shoreline vegetation.

L2: Was treated for shoreline vegetation.

L4: Was treated for Algae and shoreline vegetation.

L5: Was treated for Algae and shoreline vegetation.

L6: Was treated for shoreline vegetation.

L7: Was treated for shoreline vegetation.

L8: Was treated for shoreline vegetation.

L9: Was treated for Algae and shoreline vegetation.

L10: Was treated for Algae and shoreline vegetation.

L11: Was treated for Algae and shoreline vegetation.

L12: Was treated for Algae and shoreline vegetation.

L13: Was treated for shoreline vegetation.

L14: Was treated for shoreline vegetation.

L16: Was treated for shoreline vegetation.

L17: Was treated for Algae and shoreline vegetation.

J1: Was treated for Algae and shoreline vegetation.

J2: Was treated for shoreline vegetation.

J3: Was treated for Algae and shoreline vegetation.

J4: Was treated for shoreline vegetation.

K1: Was treated for Algae and shoreline vegetation.

K2: Was treated for Algae and shoreline vegetation.

H1: Was treated for shoreline vegetation.

H2: Was treated for shoreline vegetation.

BB1: Was treated for Algae and shoreline vegetation.

BB2: Was treated for shoreline vegetation.

S1: Was treated for shoreline vegetation.

T1: Was treated for shoreline vegetation.

T2: Was treated for Algae and shoreline vegetation.

U1: Was treated for shoreline vegetation.

V1: Was treated for Algae and shoreline vegetation.

W1: Was treated for shoreline vegetation.

W2: Was treated for shoreline vegetation.

Tab 2

PSA HORTICULTURAL

Landscape Consulting & Contract Management
"Protecting Your Landscape Investment"

8431 Prestwick Place
Trinity, FL 34655

LANDSCAPE INSPECTION RESULTS

Date:	June 4, 2026
Client:	Water's Edge HOA/CDD
HOA/CDD:	Mickey McCarthy
Manager:	Rocco Iervasi
Ameriscape:	Al Suarez
PSA:	Tom Picciano

This landscape inspection report and subsequent ones will serve as both a benchmark of current landscape maintenance concerns and the progress toward corrective actions. It will also serve as a deficiency list of items that should be addressed under the current landscape maintenance agreement.

These items must be completed by June 22, 2026. Notify PSA in writing upon their completion, via fax or email, on or before 9:00 am on June 23, 2026. The contractor must initial the bottom of each page and sign at the bottom of the last page. The reason for any uncompleted deficiency must be listed.

SCORE 1=POOR 2= FAIR 3=GOOD

3 MOWING/EDGING/TRIMMING

The mowing operation was not yet finished, but the turf is being neatly mowed with sharp blades, leaving a clean cut. The hard edging was vertical, and the edged material was thoroughly removed. Bed lines were neatly defined. There were no issues regarding the mowing operation.

Moon Lake- hard edge bike path.

3 TURF COLOR

The regular rainfall has improved the color of the St. Augustine and Bahiagrass.

Belle Haven entry and exit drive-the St. Augustine turf color ranged from a lightly mottled medium green to a consistent medium green.

Slidell entry side- the St. Augustine turf color remained a mottled medium green with some heavy lime green discoloration.

Veteran's Park-the Bahiagrass turf color was mottled medium green.

Clubhouse parking lot fence line- the St. Augustine turf color ranged from a lightly mottled medium green to a consistent medium green.

Clubhouse front left side and berm area- the St. Augustine turf color of the berm ranged from a lightly mottled medium green to a consistent medium green. The St. Augustine turf color ranged from a lightly mottled medium green to a consistent medium green.

Basketball court-the St. Augustine turf color ranged from a lightly mottled medium green to a consistent dark green.

Clubhouse along the northern section of Moon Lake Road fence-the Bahiagrass turf color was a mottled medium green.

Bahiagrass throughout the community-the Bahiagrass turf color was a mottled medium green.

June



June



June



June



May



May



April



April



March



March



March



2 TURF DENSITY

The regular rainfall has improved the density of the St. Augustine and Bahiagrass.

Clubhouse front left side and berm area- the St. Augustine turf density of the berm ranged from fair to good. The St. Augustine turf density at the front left corner by large oak was strong.

Clubhouse along the northern section of Moon Lake Road fence line- the Bahiagrass turf density was good.

Clubhouse parking lot fence line-the St. Augustine turf density remained strong.

Other common areas—the Bahiagrass turf density was good.

Veteran’s Park- the Bahiagrass turf density ranged from fair to good.

Slidell- the St. Augustine turf density ranged from fair to good.

Belle Haven entry and exit drive from Moon Lake to Creedmoor-the St. Augustine density was good.

Clubhouse basketball court sidewalk area-the St. Augustine density was good.

3 TURF WEED CONTROL

Broadleaf weeds were still present in all viable St. Augustine turf panels, but their volume remained low.

Belle Haven entry and exit side inside and outside of gate-spot treat broadleaf weeds.

Clubhouse left side berm- spot treat broadleaf weeds.

Clubhouse left side large oak-spot treat broadleaf weeds.

Slidell entry drive-spot treat broadleaf weeds.

2 TURF INSECT/DISEASE CONTROL/OVERALL HEALTH

Clubhouse left side at large oak tree - replace dead turf after one more fungicide application. **WARRANTY WORK.** *Photo below.*



Basketball court-treat turf disease. *Photo below.*



Slidell-treat turf disease. *Photo below.*



Clubhouse parking lot along Moon Lake Rd.-replace diseased turf. Kill off twice with Roundup and then sod. **WARRANTY WORK.** *Photo below.*



Clubhouse front left at large oak-treat disease activity.

Belle Haven exit drive outside of gate-treat disease activity.

The turf was cut at the proper height. The color and density of the St. Augustine and Bahiagrass have improved with the arrival of the summer rains. The volume of broadleaf weeds was relatively low. The main issue associated with the turf was again the number of diseased areas which are thinning and killing off viable sections of St. Augustine grass. Many sections of turf have lime green portions which could indicate several potential problems. Lime green or pale St. Augustine grass in Florida is usually caused by nitrogen or iron deficiencies, improper soil pH, or environmental stress, according to UF/IFAS extension reports. Common causes include rapid growth from over-fertilizing (forcing it to use up nutrients), iron deficiency in high-pH soil, or the onset of fungus from cooler, damp nights. It is recommended that soil testing and pathology testing be performed to help control disease outbreak and to improve the growing conditions for the turf.

2 SHRUB/TREE INSECT/DISEASE CONTROL/OVERALL HEALTH

Veterans Park- fertilize roebellini palm. It has frizzletop and appears that the trunk has a vascular issue and cannot uptake fertilizer easily. Health has not improved over the past month. *Photo below.*

May



June



Moon Lake Rd- treat Fakahatchee grass for spider mite.

Belle Haven cul-de-sac at lift station- replace six dead firebush. This is not warranty work. *Photo below.*



Belle Haven entry drive - treat Fakahatchee grass for spider mite.

Clubhouse gym entry door- remove dead holly.

11735 Belle Haven- Blue Daze need to be replaced. This is not warranty work.

11652 Belle Haven- replace dead podocarpus. Warranty work.

11549 Belle Haven- treat Fakahatchee grass for spider mite. *Photo below.*



11644 Belle Haven- treat Fakahatchee grass for spider mite.

11718 Belle Haven treat Fakahatchee grass for spider mite.

11715 Belle Haven -remove dead azaleas.

3 BED WEED CONTROL

Bed weed control was strong.

Belle Haven entry drive -remove bed weeds from jasmine and vines from azalea.

Boat ramp driveway-remove weeds in driveway.

3 IRRIGATION MANAGEMENT

Slidell median end cap- replace missing peanut nozzle in flower bed.

Slidell entry drive-reset all valve boxes at grade level. They are too high.

The landscape appears to be receiving sufficient irrigation.

3 SHRUB PRUNING

*It should be noted that the shrubs, including but not limited to, the hawthorns and schilling hollies, should not be pruned too tightly. This means that too much vegetative growth is being removed, limiting the plants availability to make food for itself. In addition, the plant will look more attractive by not having “holes” in it and allowing it to develop its more natural shape. (i.e. Indian Hawthorn has a natural mounded habit)

Belle Haven entry drive- prune dead sections out of azalea.

11710 Belle Haven- cut back wood line on both sides of the road including low hanging branch over sidewalk.

Belle Haven entry drive inside of gate-prune dead sections out of juniper. *Photo below.*



Shrubs were pruned in accordance with their rotational schedule, and no immediate attention was needed.

3 TREE PRUNING

Fairhope- prune oak tree away from streetlight.

3 CLEANUP/RUBBISH REMOVAL

11704 Belle Haven- remove magnolia leaf drop from nandina.

Slidell entry drive at pedestrian gate- clean up fallen branches.

There was not a significant amount of litter or vegetative debris that needed to be removed.

2 APPEARANCE OF SEASONAL COLOR

The seasonal spring flower mix display provided only a poor to fair curb appeal as some of the beds were sparse and flowers were dying off.

June



June



May



May



April



April



(0) CARRIED FORWARD FROM PRIOR MONTH

INSPECTION SCORE 32 of 36 –Passing score is 30 of 36 or 28 of 33 (with no seasonal color.)

PASSED INSPECTION Payment for June services should be released after the receipt of the DONE REPORT.

SUMMARY

ASI performed to contractual standards for this inspection. The two main issues requiring attention from this inspection was continuing disease activity in the St. Augustine turf. Soil and pathology testing are strongly recommended, as well as rotational fungicide treatments. The other issue was the deterioration of the flower display which is now in its third month and needs to be replaced. The remaining maintenance components were well cared for with easily correctable concerns.

ASI certifies that all work on this list has been completed in the 14-day timeframe specified in the contractual agreement and provided to PSA within the same period.

Signature _____

Print Name _____

Company _____

Date _____

Tab 3



UPCOMING DATES TO REMEMBER

- **Next Regular Meeting:** July 23, 2026, at 5:00 p.m.
- **Public Hearing/Budget Adoption:** August 27, 2026 3:30 p.m.

District
Manager's
Report

June 25,

2026

W
A
T
E
R
S

E
D
G
E

C
D
D

<u>FINANCIAL SUMMARY</u>		<u>4/30/2026</u>
General Fund Cash & Investment Balance:		\$379,128
Reclaimed Water Fund Balance:		\$71,731
Reserve Fund Cash & Investment Balance:		\$357,410
Debt Service Fund Investment Balance:		\$1,195,860
Total Cash and Investment Balances:		\$2,004,129
General Fund Expense Variance:	\$4,571	Over Budget

Tab 4



ESTIMATE	#1260235
ESTIMATE DATE	May 6, 2026

Water's Edge CDD
 Rizetta & Company
 3434 Colwell Ave, #200
 Tampa, FL 33614

(813) 994-1001
 LCastoria@rizzetta.com

SERVICE ADDRESS

9019 Creedmoor Ln
 New Port Richey, FL 34654

CONTACT US

P.O. Box 270184
 Tampa, FL 33688

(813) 908-0035
 Luis@LeeElectricOnline.com

ESTIMATE

SLIDEL ENTRANCE Low Voltage

Services	qty	unit price	amount
Custom Services - Custom Job Commercial SLIDEL Entrance Low Voltage	1.0	\$0.00	\$0.00
Custom Services - Custom Job Commercial There are five low voltage lights at the island with the monument That are controlled by a transformer that it is bad an improperly wired. Provide a new transformer and re-feed from the monument light then test the lights to make sure they all are working.	1.0	\$976.00	\$976.00
Custom Services - Custom Job Commercial The smaller island by the call box, the transformer is working, but the wiring is broken and also the lights need to be replaced two of them on the exit side by the gate. Rewire, provide and install 2 brass flood lights with LED bulb mr16.	1.0	\$758.00	\$758.00
			Services subtotal: \$1,734.00
Subtotal			\$1,734.00
Total			\$1,734.00

BELL HAVEN ENTRANCE Low Voltage

Services	qty	unit price	amount
Custom Services - Custom Job Commercial BELL HAVEN entrance Low Voltage Have a transformer inside the community by the exit side that feeds three lights for the oak trees on the side of the road. The transformer it is bad. Provide and replace a transformer	1.0	\$629.00	\$629.00

Custom Services - Custom Job Commercial	1.0	\$1,126.00	\$1,126.00
There is another transformer by Moon lake Road on the exit side east and it's lighting up for oak trees 8 up lights Transformer is buried recommend to lift it up Tested the transformer is bad			
Custom Services - Custom Job Commercial	1.0	\$629.00	\$629.00
The center Island has two transformers one it is working, is turning four color lights and the other transformer is not putting power out so needs to be replaced. Provide and replace the low volt transformer.			
Custom Services - Custom Job Commercial	1.0	\$0.00	\$0.00
West side the entrance side it has five low-voltage lights not working. Trace the wiring to see where they are being fed from. \$170-\$440			

Services subtotal: \$2,384.00

Subtotal \$2,384.00

Total \$2,384.00

PROVINCETOWN ENTRANCE

Services	qty	unit price	amount
Custom Services - Custom Job Commercial Provincetown Entrance	2.0	\$308.00	\$616.00
Full voltage lights need to be replaced			
Custom Services - Custom Job Commercial	5.0	\$659.00	\$3,295.00
Some extension cords where added by the gate motors. Either remove or properly add one			

Services subtotal: \$3,911.00

Subtotal \$3,911.00

Total \$3,911.00

SLIDEL ENTRANCE Full Voltage

Services	qty	unit price	amount
Custom Services - Custom Job Commercial SLIDEL Entrance Full voltage	1.0	\$541.00	\$541.00
Full voltage light it has a broken support. Provide a new light fixture and a new garden post			
Custom Services - Custom Job Commercial	1.0	\$476.00	\$476.00
Breakers for this entrance, not labeled recommend labeling the directory			
Custom Services - Custom Job Commercial	1.0	\$1,179.00	\$1,179.00
Internet box cover it is broken, recommend replacing box.			

Custom Services - Custom Job Commercial	2.0	\$659.00	\$1,318.00
Some extension cords were added by the gate motors. Either remove or properly add one. Add receptacles by the gate motors.			
Custom Services - Custom Job Commercial	1.0	\$308.00	\$308.00
At the monument there is one 120 V led need to be replaced.			
			Services subtotal: \$3,822.00
Subtotal			\$3,822.00
Total			\$3,822.00

BELL HAVEN ENTRANCE Full Voltage

Services	qty	unit price	amount
Custom Services - Custom Job Commercial	1.0	\$0.00	\$0.00
BELL HAVEN entrance Full Voltage			
Custom Services - Custom Job Commercial	1.0	\$308.00	\$308.00
Sign light at the main entrance in the center island on the west side it is not working			
Custom Services - Custom Job Commercial	4.0	\$659.00	\$2,636.00
Some extension cords where added by the gate motors. Either remove or properly add one			
			Services subtotal: \$2,944.00
Subtotal			\$2,944.00
Total			\$2,944.00

Thank you for the opportunity to service your electrical needs!



*Irrigation Service * Landscape Lighting * Drainage Solutions*

June 12, 2026

LANDSCAPE LIGHTING PROPOSAL FOR WATER'S EDGE COMMUNITY DEVELOPMENT DISTRICT

Attn: Lisa Castoria, District Manager Rizzetta & Company

LCastoria@rizzetta.com 813.994.1001

SCOPE OF WORK FOR LOW VOLTAGE LIGHTING INSTALLATION AT WATER'S EDGE

Supply and install a combination of 40-cast brass LED lighting fixtures

FIXTURE LOCATIONS

SLIDELL

Large center median

- (4) Integrated brass floodlights on signage. Two on each side.
- (6) Integrated brass floodlights to illuminate oak canopies.

Small keypad median

- (2) MR16 brass spotlights on magnolia

Total 12 fixtures

- (1) 300-watt transformer with photocell and timer.

BELLE HAVEN

Inbound

- (2) Integrated brass floodlights on large oak along sidewalk.
- (2) MR 16 brass spotlights on magnolias along sidewalk. One on each.
- (3) MR 16 brass spotlights on magnolias along sidewalk. One on each.
- (2) MR 16 brass spotlights on crape myrtles at pedestrian gate. One on each.
- (3) MR16 brass spotlights on magnolias at corner of Creedmoor. **Inside of gate.** One on each.
- (4) Integrated brass floodlights on oaks. **Inside of gate.** Two on each.

Total 16 fixtures

- (1) 300-watt transformer with photocell and timer

Outbound

- (8) Integrated brass floodlights on large oak along sidewalk. Two on each
- (2) Integrated brass floodlights on large oak. **Behind angled portion of fence.** Two on each
- (2) Integrated brass floodlights on large oaks at corner of Creedmoor. **Inside of gate.** One on each

Total 12 fixtures

- (1) 300-watt transformer with photocell and timer



*Irrigation Service * Landscape Lighting * Drainage Solutions*

- Utility locate.
- Dispose of old lighting fixtures and remove any loose wire at ground level.
- Pruning of small trees and shrubs as necessary. Excludes oaks.
- Cut out beds as necessary to help protect fixtures from mower/trimmer damage
- Lamps shall be "warm-white" 3000 Kelvin.
- Supply and install (3) 300-watt transformers with stainless steel enclosure. Includes photocell and timer. Conduit shall run from bottom of transformer to wire exit point. Run new wire. (Receptacle must be waterproof GFI with bubble-type enclosure. To be installed by electrician. Not included in proposal).
- The transformer will have some capacity for future system expansion. Total capacity depends on bulb wattage.
- All electrical connections shall be waterproof.
- Includes jetting under sidewalks up to 8' wide.
- Includes road cutting and patching to install wire on Slidell.
- All direct burial wire shall be buried 6" in soil. Wire is heavier gauge 10/2 allow for longer wire runs, and reduced voltage drop.
- Night adjust and test system.
- Price includes repair of any irrigation components damaged during the lighting installation project.

****Additional cost may be incurred if:***

- Receptacle(s) must be added for transformer installation, or any other electrical work outside of the scope of this installation, i.e., malfunctioning receptacle(s) or circuit breakers, capping of existing line voltage fixtures.*
- Underground boring installation if necessary.*
- Any other work beyond the scope of this proposal.*

All workmanship is warrantied for one year.

Lifetime manufacturer's warranty on fixtures. Excludes labor for removal and installation.

Lifetime manufacturer's warranty on transformer. Excludes timer and/or photocell. Excludes labor for removal and installation. removal and installation.

The number of fixtures presented in this proposal are the minimum needed to ensure a full and balanced appearance at each entrance.

Typical MR 16 Spotlight



Typical Integrated Floodlight





*Irrigation Service * Landscape Lighting * Drainage Solutions*

LANDSCAPE LIGHTING PROPOSAL FOR WATER'S EDGE COMMUNITY DEVELOPMENT DISTRICT

Attn: Lisa Castoria, District Manager Rizzetta & Company
LCastoria@rizzetta.com 813.994.1001

SCOPE OF WORK FOR LOW VOLTAGE LIGHTING INSTALLATION AT WATER'S EDGE

Supply and install a combination of 40-cast brass LED lighting fixtures

PROJECT COST
\$13,600.00

Terms-1/3 Deposit
Balance payable in full upon completion.

Proposal Accepted by:

Authorized signature _____

Print Name _____

Title _____

Date _____



Courtesy Electric Inc.

State Certified Electrical Contractor

Florida State License # EC13008313

5030 78th Ave, North Pinellas Park FL. 33781

(727) 687-7999

courtesyelectricfl@gmail.com

05/27/2026

Water's Edge

9019 creedmoor Ln

New Port Richey, FL 34654

Lisa Castoria

LCastoria@rizzetta.com

We propose to furnish materials and labor in accordance with the below described "Scope of Work" for the sum of: **\$14,000**

Scope of Work: Replace existing electrical landscape lighting which has been neglected

- Use existing landscape lighting layout for all new fixtures to be installed (Like for like)
- Install new low-voltage wiring 6 inches underground as per National Electrical Code
- Install new low-voltage transformer and time clock to be installed at existing location to accommodate new premium light fixtures
- Set fixture to customer approved lighting angle
- Once fixture is set to customer approved lighting angle, run system test to verify lighting needs are met

PAYMENT TERMS:

- 50% deposit required prior to commencement of work in the amount of: **\$7,000**
- 50% Remaining balance due upon completion of work in the amount of: **\$7,000**

Late Payment Penalty. In addition to the above sums, if any payment is not timely made by the due date, in addition to the sum due there shall be a **late payment penalty** due in an amount equal to one percent (1%) of the payment due for each day after the date due through and including the date paid. If any payment by Buyer remains unpaid for a period of thirty (30) days following the due date, Seller may declare all remaining unpaid sums due, and proceed to foreclose on all collateral securing Purchaser's obligations as described herein.

Comments

- **Courtesy Electric is not responsible for replacement of any landscape required to be moved or demolished to accommodate new landscape circuitry**

All material is guaranteed to be as specified. All work to be completed in a professional manor according to standard practice. Any alteration or deviation from the above "Scope of Work" involving extra costs will be executed only upon written change orders and will become an extra charge over and above this proposal. All agreements contingent upon strikes, accidents, or delays beyond our control, Owner to carry all necessary insurance. Our workers are fully covered by Worker's Compensation Insurance.

Authorized Signature:

Acceptance of this proposal, the above prices, specifications, and conditions are satisfactory and are hereby accepted you are authorized to do the work as specified. Payment will be made as outlined above.

Authorized Signature:



Respectfully, Brad DeRoller Courtesy Electric Inc.



Courtesy Electric Inc.

State Certified Electrical Contractor

Florida State License # **EC13008313**

5030 78th Ave, North Pinellas Park FL. 33781

(727) 687-7999

courtesyelectricfl@gmail.com

05/27/2026

Water's Edge

9019 creedmoor Ln

New Port Richey, FL 34654

Lisa Castoria

LCastoria@rizzetta.com

We propose to furnish materials and labor in accordance with the below described "Scope of Work" for the sum of: **\$19,950**

Scope of Work: Replace existing electrical landscape lighting which has been neglected

- Use existing landscape lighting layout for all new fixtures to be installed (Like for like)
- Install new PVC conduit 18 inches underground to accommodate new electrical wiring for landscape lighting
- Install new time clock combined with photocell to control new 120v landscape lighting circuit
- Set fixture to customer approved lighting angle
- Once fixture is set to customer approved lighting angle, run system test to verify lighting needs are met

PAYMENT TERMS:

- 50% deposit required prior to commencement of work in the amount of: **\$9,975**
- 50% Remaining balance due upon completion of work in the amount of: **\$9,975**

Late Payment Penalty. In addition to the above sums, if any payment is not timely made by the due date, in addition to the sum due there shall be a **late payment penalty** due in an amount equal to one percent (1%) of the payment due for each day after the date due through and including the date paid. If any payment by Buyer remains unpaid for a period of thirty (30) days following the due date, Seller may declare all remaining unpaid sums due, and proceed to foreclose on all collateral securing Purchaser's obligations as described herein.

Comments

- Courtesy Electric is not responsible for replacement of any landscape required to be moved or demolished to accommodate new landscape circuitry

All material is guaranteed to be as specified. All work to be completed in a professional manor according to standard practice. Any alteration or deviation from the above "Scope of Work" involving extra costs will be executed only upon written change orders and will become an extra charge over and above this proposal. All agreements contingent upon strikes, accidents, or delays beyond our control, Owner to carry all necessary insurance. Our workers are fully covered by Worker's Compensation Insurance.

Authorized Signature:

Acceptance of this proposal, the above prices, specifications, and conditions are satisfactory and are hereby accepted you are authorized to do the work as specified. Payment will be made as outlined above.

Authorized Signature:



Respectfully, Brad DeRoller Courtesy Electric Inc.

Tab 5

FLORIDA JETCLEAN

HIGH PRESSURE WATER JETTING – PIPELINE VIDEO INSPECTION SVCS PIPE LOCATING – NO DIG POINT REPAIRS – VACUUM TRUCK SERVICES

1660 Sea Breeze Drive
Tarpon Springs, FL 34689
www.floridajetclean.com

TEL : 800-226-8013
FAX : 813-926-4616

PROPOSAL

DATE : 6/8/2026
TO : Frank Nolte - Stantec
FROM : Ralph Calistri – (floridajetclean@yahoo.com)
SUBJECT : Proposal for Storm Pipe/Inlet Jet-Vac at Water’s Edge Community

Thank you for your inquiry. We confirm our capability and interest in carrying out these storm system pipe & inlet cleaning services for Stantec at your customer’s Water’s Edge project location in New Port Richey, FL.

Based on our recent work at this location, we propose as follows:

Combination jet-vac truck and crew for high-flow jetcleaning of storm piping and vacuum removal of debris/silt from inlet structures \$ 2,800.00 / Day

Subject to:

- Day-rate covers up to 8 hours on a single continuous day and includes all drive time, site time, pipe/inlet cleaning time, setup time, breakdown time, water fill time, dumping time, standby time, and all other project related time.
- 2WD vehicle access within 10’ of each inlet for placement of truck for pipe jetting and vacuum removal services.
- No vegetation cutback, trimming, or removal is included.
- Traffic control is limited to minor cone placement around truck.
- No charge access to a metered hydrant for fill of jet-vac truck’s water tanks.
- Jet-vac truck will decant strained water back into inlet structures after/during cleaning services. Transportation of solids remaining in vacuum truck can be disposed of on site at no charge, or can be transported and disposed of off site at cost of \$500.
- No plugging or pumping of pipes of any kind is included in this proposal. If these services are determined to be required, due to surcharged pipe conditions, they would the responsibility of the customer at no charge to Florida Jetclean.
- Payment: Net 30 Days

Regards,



Ralph Calistri – Florida Jetclean - 800-226-8013

FLORIDA JETCLEAN

HIGH PRESSURE WATER JETTING
EXPLOSION PROOF VIDEO INSPECTION
VACUUM TRUCK SERVICES
WWW.FLORIDAJETCLEAN.COM

1660 SEA BREEZE DRIVE
TARPON SPRINGS, FL 34689
T: 800-226-8013 / F: 813-926-4616
FLORIDAJETCLEAN@YAHOO.COM

Stantec Water's Edge – New Port Richey, FL Existing Storm Piping Video-Inspection Report

Work Performed May 2026

Conducted By:
Florida Jetclean
800-226-8013

FLORIDA JETCLEAN

HIGH PRESSURE WATER JETTING
EXPLOSION PROOF VIDEO INSPECTION
VACUUM TRUCK SERVICES
WWW.FLORIDAJETCLEAN.COM

1660 SEA BREEZE DRIVE
TARPON SPRINGS, FL 34689
T: 800-226-8013 / F: 813-926-4616
FLORIDAJETCLEAN@YAHOO.COM

REPORT

DATE : 5/22/26
TO : Frank Nolte – Stantec
FROM : Ralph Calistri (floridajetclean@yahoo.com)
SUBJECT : Water's Edge – New Port Richey, FL - Existing Storm Pipe Video Report

Florida Jetclean was mobilized to your customer's Water's Edge project location located in New Port Richey, FL on 5/22/26 to carry out the requested storm pipe video-inspection services. The below video inspection reports document the results of these inspections, along with photographs where applicable. The video-inspection footage is also provided in .MP4 format for complete detailed review.

Based on the video-inspection results of the "in scope" areas of the existing storm system that we video-inspected, we believe that the storm system backups are being caused by debris and objects that have infiltrated into the piping and are causing blockages when water attempts to convey through the piping toward the outfall. To alleviate the problem, we recommend jet-vac cleaning of the piping as a first step, with continued monitoring thereafter.

Please contact us with any questions or concerns at 800-226-8013.

Regards,



Ralph Calistri - Florida Jetclean - 800-226-8013

SETUP 1

Section Inspection Report

Project WATERS EDGE CDD	Printed on 5/22/2026	Def Standard NASSCO~PACP-6
Pipe Segment Reference 5/22/26 8:33 AM	City NEW PORT RICHEY	Street 11838 CASTINE ST
Upstream MH 8A	Operator FJC	Sewer Use
Total Length 101.9 ft	Downstream MH 8	Height 18 inch
~~ 8A->8	Length Surveyed 101.9 ft	Width
Shape Circular	Direction 8->8A	Material Reinforced Concrete Pipe
	Pre-Cleaning Not Known	Video name _0001.mp4

POSITION [ft]	DC	CODE	OBSERVATION	VIDEO	FOTO
0.00		AMH	Manhole / CB.8	00:00:09	_0001.jpg
0.18		MGO	General Observation / DEBRI IN LINE	00:00:19	_0002.jpg
54.42		RFJ	Roots Fine Joint, at 1 o'clock	00:10:08	_0009.jpg
70.34		RFJ	Roots Fine Joint, at 2 o'clock	00:09:18	_0008.jpg
86.21		RMJ	Roots Medium Joint, at 10 o'clock , 5% lost	00:08:27	_0007.jpg
86.21		RMJ	Roots Medium Joint, at 12 o'clock , 5% lost	00:08:18	_0006.jpg
86.90		MGO	General Observation / DEBRI IN PIPE	00:07:47	_0005.jpg
95.05		RFJ	Roots Fine Joint, at 9 o'clock	00:06:39	_0004.jpg
101.90		MGO	General Observation / CB.8A	00:03:33	_0003.jpg

Photos

Project WATERS EDGE CDD	Printed on 5/22/2026	Def Standard NASSCO~PACP-6
Pipe Segment Reference	City NEW PORT RICHEY	Street 11838 CASTINE ST



File name: **_0001.jpg**
 Inspection date and time: **5/22/26 8:33 AM**
 Position: **0 ft**
 Code: **AMH**
Manhole / CB.8



File name: **_0002.jpg**
 Inspection date and time: **5/22/26 8:33 AM**
 Position: **0.18 ft**
 Code: **MGO**
General Observation / DEBRI IN LINE



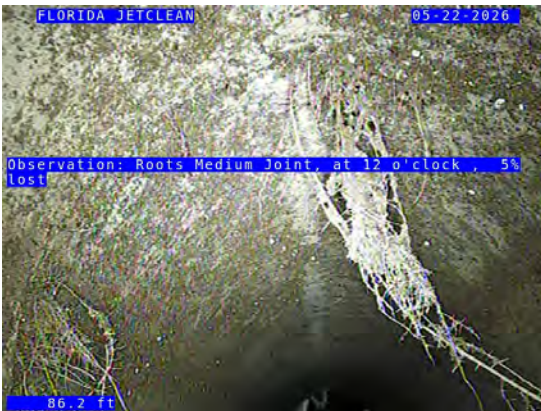
File name: **_0009.jpg**
 Inspection date and time: **5/22/26 8:33 AM**
 Position: **54.42 ft**
 Code: **RFJ**
Roots Fine Joint, at 1 o'clock

Photos

Project WATERS EDGE CDD	Printed on 5/22/2026	Def Standard NASSCO~PACP-6
Pipe Segment Reference	City NEW PORT RICHEY	Street 11838 CASTINE ST



File name: **_0008.jpg**
 Inspection date and time: **5/22/26 8:33 AM**
 Position: **70.34 ft**
 Code: **RFJ**
Roots Fine Joint, at 2 o'clock



File name: **_0006.jpg**
 Inspection date and time: **5/22/26 8:33 AM**
 Position: **86.21 ft**
 Code: **RMJ**
Roots Medium Joint, at 12 o'clock , 5% lost



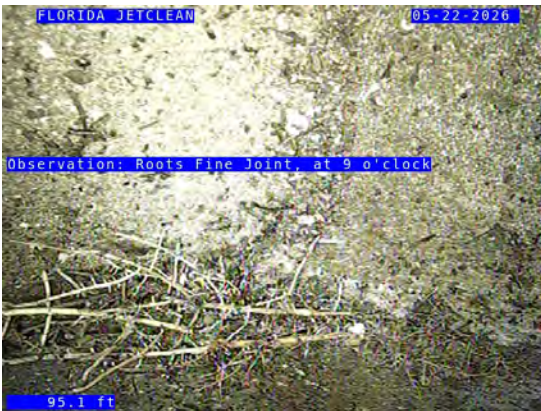
File name: **_0007.jpg**
 Inspection date and time: **5/22/26 8:33 AM**
 Position: **86.21 ft**
 Code: **RMJ**
Roots Medium Joint, at 10 o'clock , 5% lost

Photos

Project WATERS EDGE CDD	Printed on 5/22/2026	Def Standard NASSCO~PACP-6
Pipe Segment Reference	City NEW PORT RICHEY	Street 11838 CASTINE ST



File name: **_0005.jpg**
 Inspection date and time: **5/22/26 8:33 AM**
 Position: **86.90 ft**
 Code: **MGO**
General Observation / DEBRI IN PIPE



File name: **_0004.jpg**
 Inspection date and time: **5/22/26 8:33 AM**
 Position: **95.05 ft**
 Code: **RFJ**
Roots Fine Joint, at 9 o'clock



File name: **_0003.jpg**
 Inspection date and time: **5/22/26 8:33 AM**
 Position: **101.90 ft**
 Code: **MGO**
General Observation / CB.8A

SETUP 2

Section Inspection Report

Project WATERS EDGE CDD	Printed on 5/22/2026	Def Standard NASSCO~PACP-6
Pipe Segment Reference 5/22/26 9:03 AM	City NEW PORT RICHEY	Street 11838 CASTINE ST
Upstream MH 8	Operator FJC	Sewer Use
Total Length 30.9 ft	Downstream MH 7A	Height 18 inch
Length Surveyed 30.9 ft	Direction 8->7A	Material Reinforced Concrete Pipe
Width	Pre-Cleaning Not Known	Video name _0002.mp4
Shape Circular		

POSITION [ft]	DC	CODE	OBSERVATION	VIDEO	FOTO
8					
Scale 1:235					
0.00		AMH	Manhole / 8	00:00:06	_0010.jpg
4.70		MGO	General Observation / DEBRI IN PIPE	00:00:20	_0011.jpg
5.80		MGO	General Observation / ROCK IN LINE	00:00:34	_0012.jpg
30.85		AMH	Manhole / 7A	00:01:41	_0013.jpg

Photos

Project WATERS EDGE CDD	Printed on 5/22/2026	Def Standard NASSCO~PACP-6
Pipe Segment Reference	City NEW PORT RICHEY	Street 11838 CASTINE ST



File name: **_0010.jpg**
 Inspection date and time: **5/22/26 9:03 AM**
 Position: **0 ft**
 Code: **AMH**
Manhole / 8



File name: **_0011.jpg**
 Inspection date and time: **5/22/26 9:03 AM**
 Position: **4.70 ft**
 Code: **MGO**
General Observation / DEBRI IN PIPE



File name: **_0012.jpg**
 Inspection date and time: **5/22/26 9:03 AM**
 Position: **5.80 ft**
 Code: **MGO**
General Observation / ROCK IN LINE

Photos

Project WATERS EDGE CDD	Printed on 5/22/2026	Def Standard NASSCO~PACP-6
Pipe Segment Reference	City NEW PORT RICHEY	Street 11838 CASTINE ST



File name: **_0013.jpg**
Inspection date and time: **5/22/26 9:03 AM**
Position: **30.85 ft**
Code: **AMH**
Manhole / 7A

SETUP 3

Section Inspection Report

Project WATERS EDGE CDD	Printed on 5/22/2026	Def Standard NASSCO~PACP-6
Pipe Segment Reference 5/22/26 9:20 AM	City NEW PORT RICHEY	Street 11838 CASTINE ST
Upstream MH 7A	Operator FJC	Sewer Use
Total Length 44.3 ft	Downstream MH 7	Height 18 inch
Length Surveyed 44.3 ft	Direction 7->7A	Material Reinforced Concrete Pipe
Width	Pre-Cleaning Not Known	Video name _0003.mp4
Shape Circular	Material Reinforced Concrete Pipe	

POSITION [ft]	DC	CODE	OBSERVATION	VIDEO	FOTO
0.00		AMH	Manhole / 7	00:00:06	_0014.jpg
44.27		AMH	Manhole / 7A	00:01:00	_0015.jpg

Scale 1:337

7

7A

Photos

Project WATERS EDGE CDD	Printed on 5/22/2026	Def Standard NASSCO~PACP-6
Pipe Segment Reference	City NEW PORT RICHEY	Street 11838 CASTINE ST



File name: **_0014.jpg**
Inspection date and time: **5/22/26 9:20 AM**
Position: **0 ft**
Code: **AMH**
Manhole / 7



File name: **_0015.jpg**
Inspection date and time: **5/22/26 9:20 AM**
Position: **44.27 ft**
Code: **AMH**
Manhole / 7A

SETUP 4

Section Inspection Report

Project WATERS EDGE CDD	Printed on 5/22/2026	Def Standard NASSCO~PACP-6
Pipe Segment Reference 5/22/26 9:29 AM	City NEW PORT RICHEY	Street 11838 CASTINE ST
Upstream MH 7	Operator FJC	Sewer Use
Total Length 104.5 ft	Downstream MH 6	Height 18 inch
Length Surveyed 104.5 ft	Direction 7->6	Material Reinforced Concrete Pipe
Width	Pre-Cleaning Not Known	Video name _0004.mp4
Shape Circular		

POSITION [ft]	DC	CODE	OBSERVATION	VIDEO	FOTO
0.00		AMH	Manhole / 7	00:00:06	_0016.jpg
104.55		AMH	Manhole / 6	00:02:52	_0017.jpg

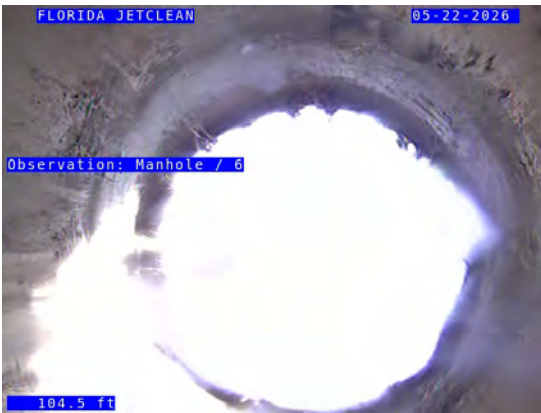
Scale 1:796

Photos

Project WATERS EDGE CDD	Printed on 5/22/2026	Def Standard NASSCO~PACP-6
Pipe Segment Reference	City NEW PORT RICHEY	Street 11838 CASTINE ST



File name: **_0016.jpg**
Inspection date and time: **5/22/26 9:29 AM**
Position: **0 ft**
Code: **AMH**
Manhole / 7



File name: **_0017.jpg**
Inspection date and time: **5/22/26 9:29 AM**
Position: **104.55 ft**
Code: **AMH**
Manhole / 6

SETUP 5

Section Inspection Report

Project WATERS EDGE CDD	Printed on 5/22/2026	Def Standard NASSCO~PACP-6
Pipe Segment Reference 5/22/26 9:46 AM	City NEW PORT RICHEY	Street 11838 CASTINE ST
Upstream MH 6	Operator FJC	Sewer Use
Total Length 137.1 ft	Downstream MH 5A	Height 18 inch
~~ 6->5A	Length Surveyed 137.1 ft	Width
Shape Circular	Direction 5A->6	Material Reinforced Concrete Pipe
	Pre-Cleaning Not Known	Video name _0005.mp4

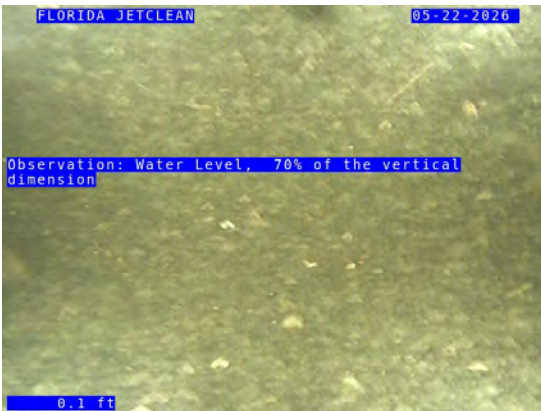
POSITION [ft]	DC	CODE	OBSERVATION	VIDEO	FOTO
5A					
Scale 1:1044					
0.11		AMH	Manhole / 5A	00:00:08	_0018.jpg
0.11		MWL	Water Level, 70% of the vertical dimension	00:00:11	_0019.jpg
137.07		AMH	Manhole / 6	00:02:54	_0020.jpg

Photos

Project WATERS EDGE CDD	Printed on 5/22/2026	Def Standard NASSCO~PACP-6
Pipe Segment Reference	City NEW PORT RICHEY	Street 11838 CASTINE ST



File name: **_0018.jpg**
 Inspection date and time: **5/22/26 9:46 AM**
 Position: **0.11 ft**
 Code: **AMH**
Manhole / 5A



File name: **_0019.jpg**
 Inspection date and time: **5/22/26 9:46 AM**
 Position: **0.11 ft**
 Code: **MWL**
Water Level, 70% of the vertical dimension



File name: **_0020.jpg**
 Inspection date and time: **5/22/26 9:46 AM**
 Position: **137.07 ft**
 Code: **AMH**
Manhole / 6

SETUP 6

Section Inspection Report

Project WATERS EDGE CDD	Printed on 5/22/2026	Def Standard NASSCO~PACP-6
Pipe Segment Reference 5/22/26 10:08 AM	City NEW PORT RICHEY	Street 11838 CASTINE ST
Upstream MH 5A	Operator FJC	Sewer Use
Total Length 178.3 ft	Downstream MH 3	Height 18 inch
~~ 5A->3	Length Surveyed 178.3 ft	Width
Shape Circular	Direction 5A->3	Material Reinforced Concrete Pipe
	Pre-Cleaning Not Known	Video name _0006.mp4

POSITION [ft]	DC	CODE	OBSERVATION	VIDEO	FOTO
5A					
0.00		AMH	Manhole / 5A	00:01:51	_0021.jpg
0.00		MWL	Water Level, 90% of the vertical dimension	00:02:06	_0022.jpg
178.31		AMH	Manhole / 3	00:07:55	

Photos

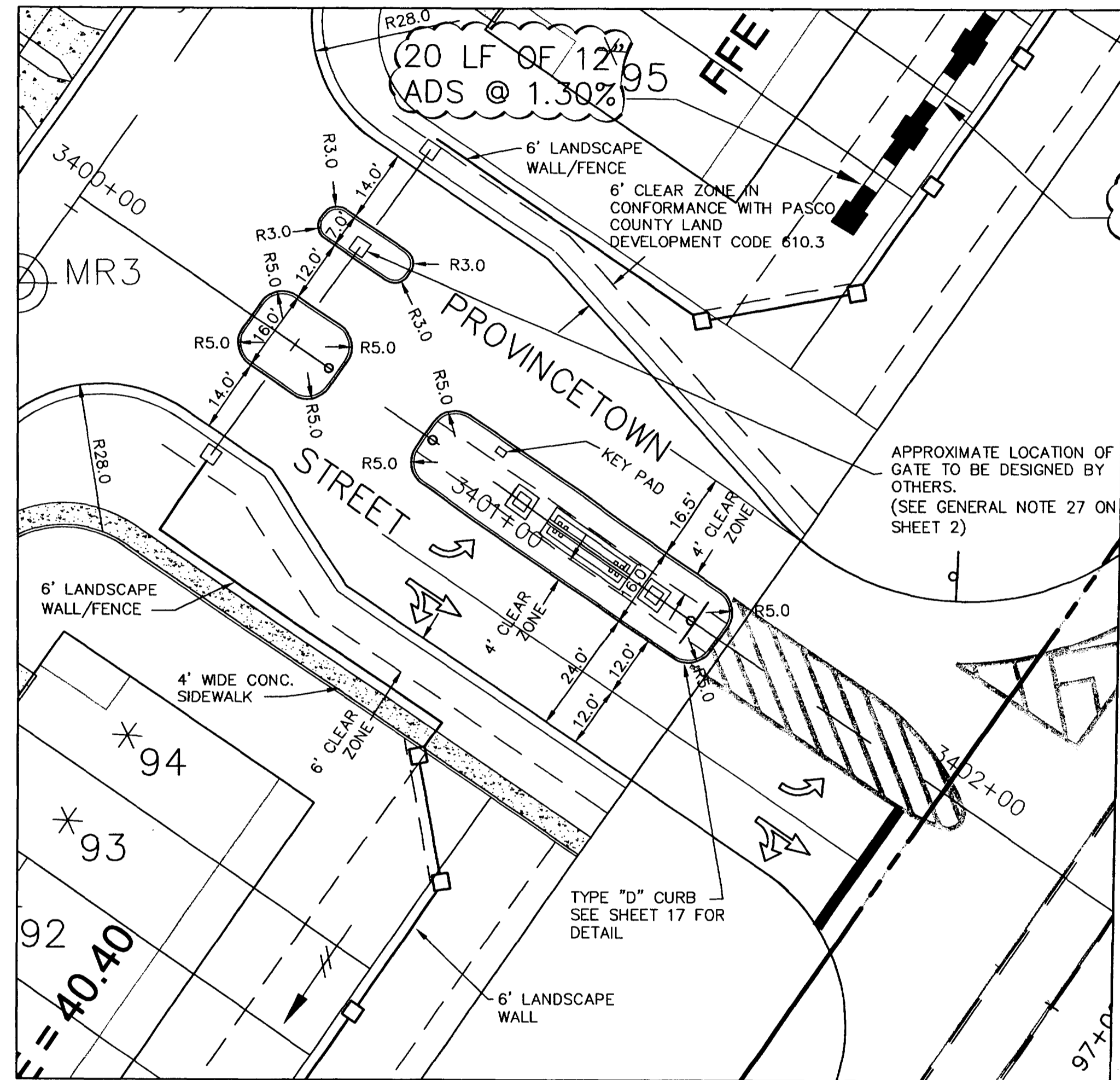
Project WATERS EDGE CDD	Printed on 5/22/2026	Def Standard NASSCO~PACP-6
Pipe Segment Reference	City NEW PORT RICHEY	Street 11838 CASTINE ST



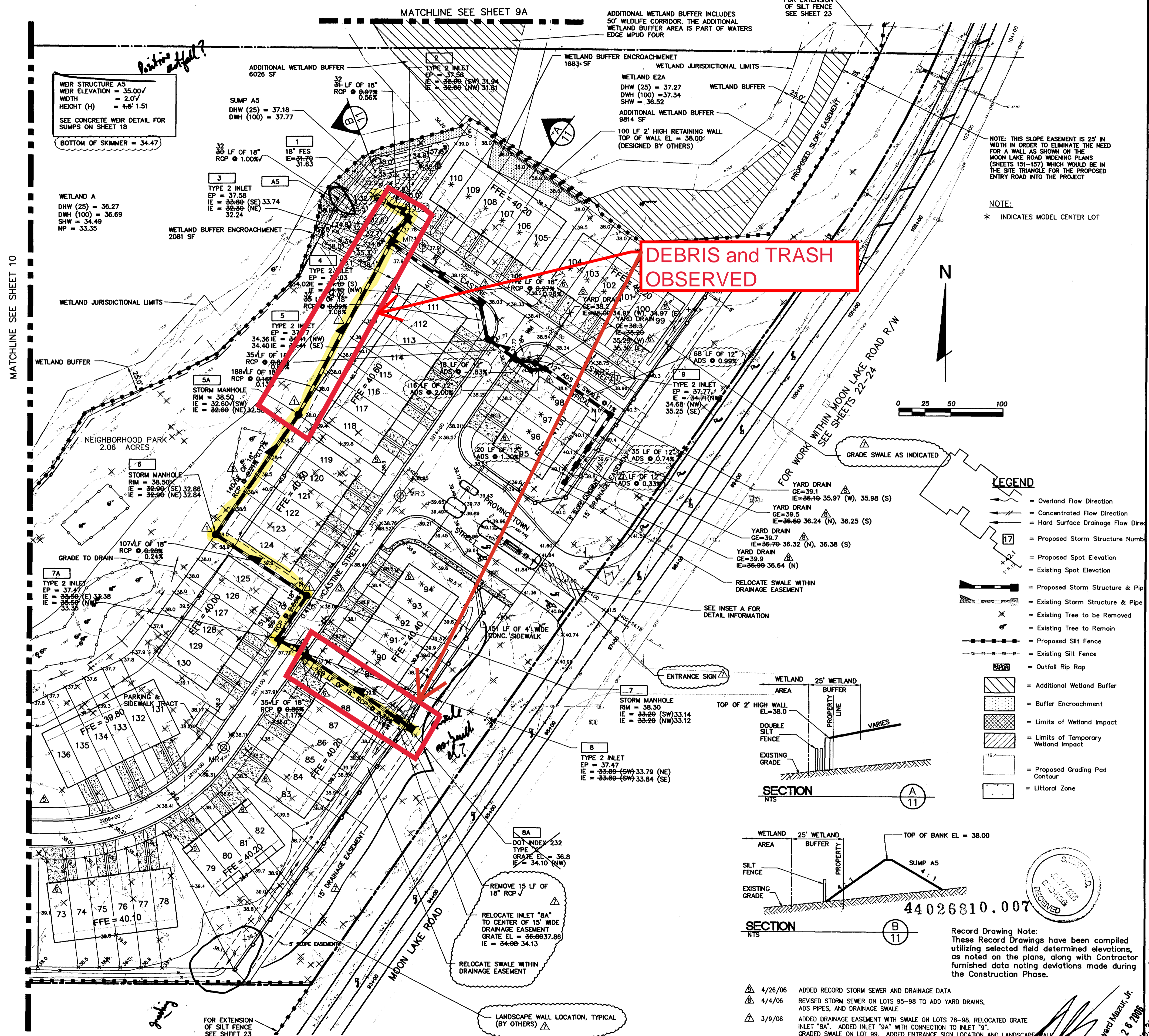
File name: **_0021.jpg**
Inspection date and time: **5/22/26 10:08 AM**
Position: **0 ft**
Code: **AMH**
Manhole / 5A



File name: **_0022.jpg**
Inspection date and time: **5/22/26 10:08 AM**
Position: **0 ft**
Code: **MWL**
Water Level, 90% of the vertical dimension

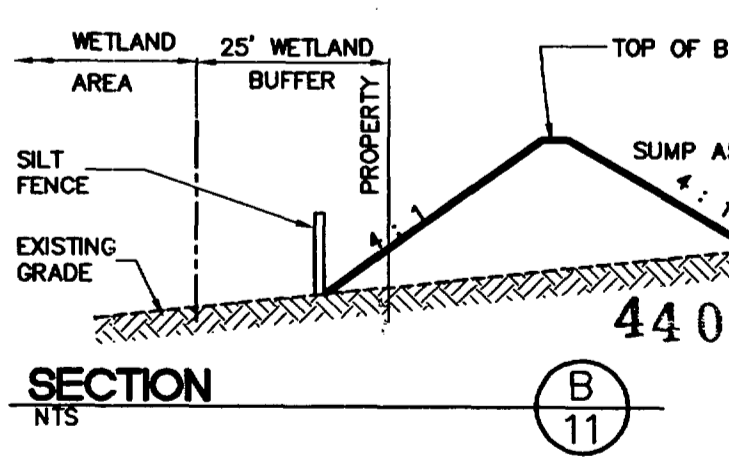
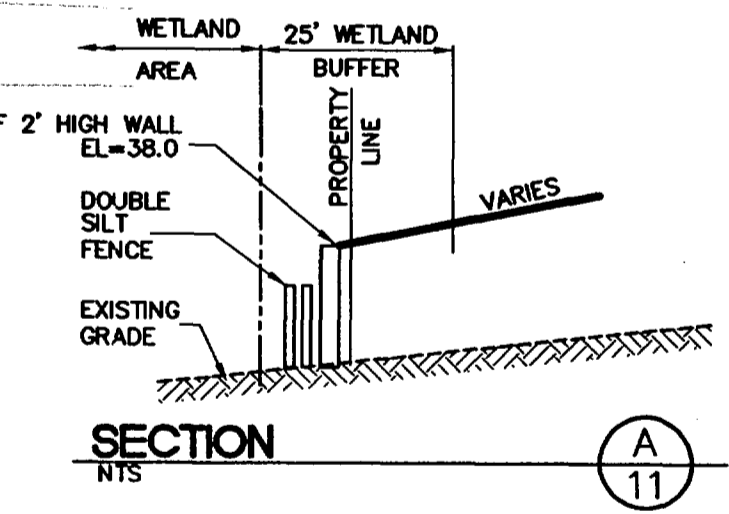


INSET A
1:20



DEBRIS and TRASH
OBSERVED

- LEGEND**
- Overland Flow Direction
 - Concentrated Flow Direction
 - Hard Surface Drainage Flow Direction
 - 17 Proposed Storm Structure Number
 - Proposed Spot Elevation
 - Existing Spot Elevation
 - Proposed Storm Structure & Pipe
 - Existing Storm Structure & Pipe
 - ✕ Existing Tree to be Removed
 - Existing Tree to Remain
 - Proposed Silt Fence
 - Existing Silt Fence
 - Outfall Rip Rap
 - Additional Wetland Buffer
 - Buffer Encroachment
 - Limits of Wetland Impact
 - Limits of Temporary Wetland Impact
 - Proposed Grading Pad Contour
 - Littoral Zone



Record Drawing Note:
These Record Drawings have been compiled utilizing selected field determined elevations, as noted on the plans, along with Contractor furnished data noting deviations made during the construction phase.

NO.	DATE	REVISIONS	APPROVED BY	DATE
1	1/21/06	ADDED RECORD STORM SEWER AND DRAINAGE DATA		
2	4/4/06	REVISED STORM SEWER ON LOTS 95-98 TO ADD YARD DRAINS, ADS PIPES, AND DRAINAGE SWALE		
3	3/9/06	ADDED DRAINAGE EASEMENT WITH SWALE ON LOTS 78-98. RELOCATED GRATE INLET "8A". ADDED INLET "9A" WITH CONNECTION TO INLET "9". GRADED SWALE ON LOT 99. ADDED ENTRANCE SIGN LOCATION AND LANDSCAPE WALL		
4	2/15/06	ADDED DOUBLE DRIVEWAYS ON SELECTED LOTS		
5	1/21/06	REMOVED ADDITIONAL PARKING SPACES WITHIN LOTS 98, 118, 119, & 136		
6	1/19/06	ADDED SUPPLEMENTARY REAR AND FRONT LOT SPOT ELEVATIONS		
7	1/05/06	REVISED STREET NAMES		
8	11/04/05	ADDED ADDITIONAL PARKING		
9	4/4/05	STORMWATER MODIFIED TO REMOVE SECTION ON CASTINE DRIVE & PER SWFMD COMMENTS		

DESIGNED	JC
DRAWN	JC
CHECKED	EM
DATE	

FLORIDA DESIGN CONSULTANTS, INC.
ENGINEERS, ENVIRONMENTALISTS, SURVEYORS & PLANNERS
3030 Starkey Blvd, New Port Richey FL 34655
Tel: (727) 849-7588 - Fax: (727) 846-3648

PREPARED FOR:
THE RYLAND GROUP, INC.
255 PINE AVENUE NORTH
OLDSMAR, FLORIDA 34667
PHONE (813) 329-7600 FAX (813) 329-7688

SHEET DESCRIPTION:
WATERS EDGE TOWNHOMES (WATERS EDGE MPUD PARCEL 15) CONSTRUCTION PLANS PAVING, GRADING, AND DRAINAGE PLAN

DATE: 1/31/05
OF 24

K:\NA\Proj\Draw\WatersEdge\WatersEdge_MPUD_P15_Paving_Grading_Drainage.dwg - Jun 26, 2006 @ 8:32am - aml

© Copyright 2006 Florida Design Consultants, Inc. Drawings and concepts may not be used or reproduced without written permission.

Tab 6

From: Nolte, Frank <frank.nolte@stantec.com>

Sent: Wednesday, June 10, 2026 4:21 PM

To: Lisa Castoria <L.Castoria@rizzetta.com>

Subject: [EXTERNAL]FW: Hydrant Meter Request - Waters Edge CDD - New Port Richey

Ok I just talked to the County over the phone. Here's what we need to do for this hydrant meter hookup... Have Rizzetta fast track a check in the amount of **\$2,355.00** and mail it to:

**Pasco County Utilities Administration Building
C/O Dermedrix White
19420 Central Boulevard
Land O Lakes, FL 34637**

Print the email below from the County and include it in the envelope that the check is in. It will have the account information and customer ID on it so they know who to apply the payment to.

Once received/deposited, they will come out and install the meter at the hydrant location I specified along Castine street. This can take 3-5 days after they deposit the check. Once the contractor is completed with their work, I will notify the County to close the account, and they will come remove the meter. Depending on the date when completed, they may send a bill to the 3434 Colwell Avenue for the water that we use. Disregard that invoice. In early July, they have a commissioners meeting, where they will review the account balance and send a refund check for the deposit amount, minus the cost for the water used, (most likely in the amount of \$2,100 or close to it). It will be sent from Pasco County Commissioners to the Colwell address. This would then be deposited back into the Waters Edge CDD account.

When all said and done, the total cost for the hydrant meter will be around \$250.

Sorry, this is so complicated. I am going to call you to discuss.

Frank Nolte

Project Manager

Direct: (727) 431-1645

frank.nolte@stantec.com



From: Dermedrix V. White <dwhite@pascocountyfl.net>
Sent: Wednesday, June 10, 2026 3:59 PM
To: Nolte, Frank <frank.nolte@stantec.com>
Subject: Hydrant Meter Request - Waters Edge CDD - New Port Richey

You don't often get email from dwhite@pascocountyfl.net. [Learn why this is important](#)

Dear WATER'S EDGE CDD:

Pasco County Utilities has successfully processed your application for 2" Hydrant Meter Service at 11828 CASTINE HYDRANT STREET. Your customer and account numbers are listed below:

Customer #: 01572591 Account #: 1343365

The following fee(s) is/are now due on the account:

\$ 2,160.00	Deposit
\$ 195.00	Activation Fee

\$ 2,355.00	Total Amount Due

These fees may be paid in three (3) ways:

Please send an email to tempmeters@pascocountyfl.net to confirm payment.

Online using the Online Quick Pay option.

[https://www.invoicecloud.com/portal/\(S\(bl0t4b2pseapsaxtvgs3ilx\)\)/2/Site.aspx?G=79f4d9ac-0123-4376-8382-269ac298599d](https://www.invoicecloud.com/portal/(S(bl0t4b2pseapsaxtvgs3ilx))/2/Site.aspx?G=79f4d9ac-0123-4376-8382-269ac298599d)

You will need to select **Utilities New Customers Deposits & Fees** as the Payment Type. Please know when making payments online, using a credit card, there is a \$125,000.00 limit per transaction and a 2.75% processing fee per transaction. ACH payments made, using your banking information, will be charged a \$2.50 processing fee, up to a maximum payment amount of \$125,000.00. You will need your customer and account numbers to use this payment option.

Pay-by-Phone by calling 1-855-786-5344. Please know when making payments via phone, using a credit card, there is a \$125,000.00 limit per transaction and a 2.75% processing fee per transaction. You will need your customer and account numbers to use this payment option.

You will need to manually enter the payment amount (Total Amount due) and reply to this email once payment is made to ensure your water is activated. All payments for same day service must be received before 2 p.m.

Checks may be dropped off at any of our Pasco County Utilities Customer Service Centers. Please know the customer and account numbers and service address, are required on each check stub when using this payment option. The drop box is available 24/7 at the Land O Lakes and New Port Richey locations; however, Drive-through Service windows are only open Monday through Friday from 8:30 a.m. to 4 p.m.

Deposits, if applicable, are held in a non-interest-bearing account (Pasco County Ordinance Section 110-38(d)). The deposit will be credited to the account after 24 months of consecutive, on-time payments and no returned checks; or, if the account is closed, the deposit will be applied to the final bill. Any credit will be mailed to the Company/Business whose name is on the account.

Important Note: Please do not attempt to register your new account information, until you have received your first Cycle Bill, as this will cause an error.

For any questions or concerns, please call Pasco County Utilities at (813) 235-6012 or email us at tempmeters@MyPasco.net.

Thank you,



Dermedrix White
Project Coordinator III
Utilities CI&S

Pasco County
P 813-235-6168

Pasco County Utilities Administration Building
19420 Central Boulevard
Land O Lakes, FL 34637

dwhite@mypasco.net
www.mypasco.net

Tab 7

STRALEY ROBIN VERICKER

Attorneys At Law

1510 W. Cleveland St.
Tampa, Florida 33606
Tel: (813) 223-9400

Writer's Direct Dial: (813) 901-4945
Writer's Email: jvericker@srvlegal.com
www.srvlegal.com

June 16, 2026

Via Email

Grau & Associates
Attn: Ben Steets
951 Yamato Rd., Ste. 280
Boca Raton, FL 33431
Auditor bsteets@graucpa.com

**Re: Waters Edge Community Development District
Fiscal Year 2024/2025 Audit**

Ladies and Gentlemen:

By this communication, we are responding to the letter received in our offices on June 15, 2026, requesting that we furnish certain information to you concerning our representation of Waters Edge Community Development District (the "**District**") and pending or threatened litigation involving the District.

While this firm may represent the District on a regular basis, our engagements have been limited to specific matters as to which we may have been consulted. There may exist matters of a legal nature that could have a bearing on the financial position of the District with respect to which we have not been consulted and consequently have no knowledge. The information furnished by this letter is limited to matters which have been given substantive attention by the lawyers in this firm in the form of legal consultation and, where appropriate, legal representation from October 1, 2024, to the effective date of this response. We have, to the extent believed necessary, attempted to determine from the lawyers in this firm who have performed services for the District since the beginning of the period upon which the report is based, whether such services involved substantive attention in the form of legal consultation or representation in litigation. Beyond that, no review has been made of any of the District's transactions or other matters for the purposes of identifying loss contingencies, nor have we made inquiry with other law firms who either are now or who have in the past performed services for the District.

The response of this firm is limited to loss contingencies coming within the meaning of the American Bar Association Statement of Policy Regarding Lawyers' Responses to Auditors' Requests for Information (the "**Statement of Policy**") which are considered to be probable (within the meaning of the Commentary accompanying the Statement of Policy) of assertion and which are considered individually or collectively material to the presentation of the District's financial statements and is further limited to the matters set out herein. The firm is not undertaking to respond or comment upon all aspects of the District's business activities and

except as noted in this communication, no inference should be drawn on any matters beyond the scope of this response.

The information as supplied in this audit response is solely for the auditor's information in connection with your audit of the financial condition of the District. Without the express written approval of this law firm and the District, it is not to be quoted in whole or in part or otherwise referred to in any financial statements of the District or related documents, nor is it to be filed with any governmental agency or other person.

This response is limited by, and subject to, the Statement of Policy; without limiting the generality of the foregoing, the limitations set forth in the Statement of Policy on the scope and use of this response are specifically incorporated herein by reference, and any description herein of any "loss contingencies" is qualified by the meaning as described in the Statement of Policy and the accompanying commentary.

The District does not intend to waive the attorney-client privilege with respect to any information which the District has furnished to us. Moreover, please be advised that our response to you should not be construed in any way to constitute a waiver of the protection of the attorney work-product privilege with respect to any of our files involving the District.

Subject to the foregoing, we advise you that from October 1, 2024, to the effective date of this response, we have not been engaged to give substantive attention to, or represent the District in connection with, material (defined in the aforesaid letter to us as matters involving amounts exceeding \$5,000 individually or in the aggregate) loss contingencies coming within the scope of clause (a) of paragraph 5 of the Statement of Policy.


In the letter to us, the District did not specifically identify and specifically request us to comment on any loss contingencies coming within the scope of clause (c) of Paragraph 5 of the Statement of Policy. Therefore, we have not commented on any such loss contingencies. Please be advised that pursuant to clauses (b) and (c) of Paragraph 5 of the Statement of Policy and accompanying Commentary, it would be inappropriate for us to respond to a general inquiry relating to the existence of unasserted possible claims or assessments involving the District. We can only furnish information concerning those upon which the District has specifically requested in writing that we comment, nor can we comment upon the adequacy of the District's listing, if any, of unasserted possible claims or assessments or its assertions concerning the advice, if any, about the need to disclose same.

Consistent with the last sentence of Paragraph 6 of the Statement of Policy and pursuant to the District's request, however, this letter will confirm as correct the District's understanding as set forth in the aforesaid letter to us that whenever, in the course of performing legal services for the District with respect to a matter recognized to involve an unasserted possible claim or assessment that may call for financial statement disclosure, we have formed a professional conclusion that the District must disclose or consider disclosure concerning such possible claim or assessment, we as a matter of professional responsibility to the District, will so advise the District of such disclosure and the applicable requirements of Statement of Financial Accounting Standards No. 5.

The information set forth herein is as of the date hereof, except as otherwise noted, and we assume no obligation to advise you of changes which may have been or are brought to our attention thereafter.

The District was not indebted to this law firm as of September 30, 2025.

Sincerely,



John M. Vericker
*Board Certified City, County
& Local Government Law*

JMV/mbs

cc: Lisa Castoria, District Manager (*via email*)
Ken Smith, Chair (*via email*)
Cari Allen Webster, District Counsel (*via email*)

Tab 8

MINUTES OF MEETING

Each person who decides to appeal any decision made by the Board with respect to any matter considered at the meeting is advised that the person may need to ensure that a verbatim record of the proceedings is made, including the testimony and evidence upon which such appeal is to be based.

**WATERS EDGE
COMMUNITY DEVELOPMENT DISTRICT**

The regular meeting of the Board of Supervisors of Waters Edge Community Development District to be held on **Thursday, May 28, 2026, at 3:30 p.m.** at the Waters Edge Clubhouse, located at 9019 Creedmoor Lane, New Port Richey, FL 34654.

Present and constituting a quorum:

Ken Smith	Board Supervisor, Chairman
George Anastasopoulos	Board Supervisor, Vice Chairman
Craig Pettitt	Board Supervisor, Assistant Secretary
Gabriel Papadopoulos	Board Supervisor, Assistant Secretary
Dan Knoblock	Board Supervisor, Assistant Secretary

Also present were:

Sean Craft	District Manager, Rizzetta & Co., Inc.
Cari Webster	District Counsel, Straley, Robin & Vericker (via phone)
Frank Nolte	District Engineer, Stantec (via phone)
Tyler Hewitt	Sprinkler Solutions
Bert Smith	Sitex

Audience	Not Present
----------	--------------------

FIRST ORDER OF BUSINESS

Call to Order

Mr. Craft called the meeting to order at 3:30 p.m. and confirmed there was a quorum.

SECOND ORDER OF BUSINESS

Audience Comments on Agenda Items

There were no audience members present.

THIRD ORDER OF BUSINESS

Staff Reports

A. Aquatics Managers Monthly Report

The Board reviewed the monthly aquatics report. There were no comments at this time.

i. Consideration of Revised Aquatics Maintenance Agreement

The Board approved the revised agreement with Sitex with the new amount to be charged \$2185/per month.

On a motion by Mr. Pettitt, seconded by Mr. Papadopoulos, with all in favor, the Board of Supervisors approved the Revised Aquatics Maintenance Agreement for Waters Edge Community Development District.

ii. Discussion on Sitex Pond Clean Up

Sitex stated that they will perform a sweep of the ponds to remove the trash within the parameters of their contract.

B. Irrigation Report

The Board would like to know what caused the outage on May 21st and if it has been resolved. They also asked what quantity of rain is needed to trigger the shut off on the rain sensor.

C. District Engineer

The Board reviewed the engineer's report. There were no questions or comments at this time.

i. Ratification of Stantec Proposal for Storm Pipe

On a motion by Mr. Smith, seconded by Mr. Anastasopoulos, with all in favor, the Board of Supervisors ratified the Stantec Proposal for Storm Pipes in the amount of \$2,400 for Waters Edge Community Development District.

It was noted that a proposal to jet-vac the pipes will follow and be provided by Mr. Nolte.

D. PSA Inspection Reports

The Board reviewed the PSA report. There were no questions or comments at this time.

84 **E. District Counsel**
85 No Report

86
87 **F. District Manager**

88 Mr. Craft advised that the next meeting is scheduled for June 25, 2026, at 5:00 pm
89 and reviewed the monthly report with the Board.

90
91 Mr. Craft presented the 1st quarter website audit report and informed the Board that
92 all areas passed. He also presented the Voter Registration count and confirmed
93 that there are 1,973 registered voters in the community.

94
95 **FOURTH ORDER OF BUSINESS**

**Consideration of Resolution 2026-05;
Approving FY 2026-2027 Proposed
Budget and Setting Public Hearing**

96
97
98
99 The Board reviewed and approved the proposed budget as presented and set the
100 public hearing for August 27th, 2026 at 3:30 p.m.

101

On a motion by Mr. Smith, seconded by Mr. Anastasopoulos, with all in favor, the Board of Supervisors adopted Resolution 2026-05; Approving FY 2026-2027 Proposed Budget and Setting Public Hearing, for Waters Edge Community Development District.

102

103 **FIFTH ORDER OF BUSINESS**

**Discussion on Belle Haven Landscape
Lighting Proposals**

104

105

106

107 The Board held a brief discussion and tabled this item to the June meeting. They
108 would like additional proposals to be considered.

109

110 **SIXTH ORDER OF BUSINESS**

**Consideration of Pond Tree Removal
Proposals**

111

112

113 The Board reviewed three proposals for tree removal. After some discussion, they
114 agreed to approve the High Trim proposal in the amount of \$1,975.

115

On a motion by Mr. Pettitt, seconded by Mr. Papadopoulos, with all in favor, the Board of Supervisors approved the High Trim Proposal in the amount of \$1,975, for Waters Edge Community Development District.

116

117

118

119

120

121

**WATERS EDGE COMMUNITY DEVELOPMENT DISTRICT
May 28, 2026, - Minutes of Meeting**

122 **SEVENTH ORDER OF BUSINESS** **Ratification of DDD Pond Fencing**
123 **Proposal**
124

On a motion by Mr. Pettitt, seconded by Mr. Papadopoulos, with all in favor, the Board of Supervisors ratified the DDD Pond Fence Proposal in the amount of \$31,102, for Waters Edge Community Development District.

125
126 **EIGHTH ORDER OF BUSINESS** **Discussion on Educational Workshop**
127 **on Irrigation for Residents**
128

129 This discussion was tabled to the June meeting.

130
131 **NINTH ORDER OF BUSINESS** **Consideration of the Minutes of the**
132 **Board of Supervisors' Regular**
133 **Meeting held on April 23, 2026**
134

On a motion by Mr. Papadopoulos, seconded by Mr. Pettitt, with all in favor, the Board of Supervisors approved the minutes for the regular meeting that was held on April 23, 2026, as presented, for Waters Edge Community Development District.

135
136 **TENTH ORDER OF BUSINESS** **Consideration of the Minutes of the**
137 **Board of Supervisors' Budget**
138 **Workshop Meeting held on April 13,**
139 **2026**
140

On a motion by Mr. Smith, seconded by Mr. Pettitt, with all in favor, the Board of Supervisors approved the minutes for the budget workshop meeting that was held on April 13, 2026, as presented, for Waters Edge Community Development District.

141
142 **ELEVENTH ORDER OF BUSINESS** **Consideration of Operation and**
143 **Maintenance Expenditures for April**
144 **2026**
145

On a motion by Mr. Anastopoulos, seconded by Mr. Smith, with all in favor, the Board of Supervisors ratified the operation and maintenance expenditures for April 2026 (\$46,532.51), for Waters Edge Community Development District.

146
147
148
149
150

151 **TWELFTH ORDER OF BUSINESS** **Audience Comments & Supervisor**
152 **Requests**

153
154 Mr. Pettitt would like an update on Oyster Bay dumping to be added to the June
155 agenda.

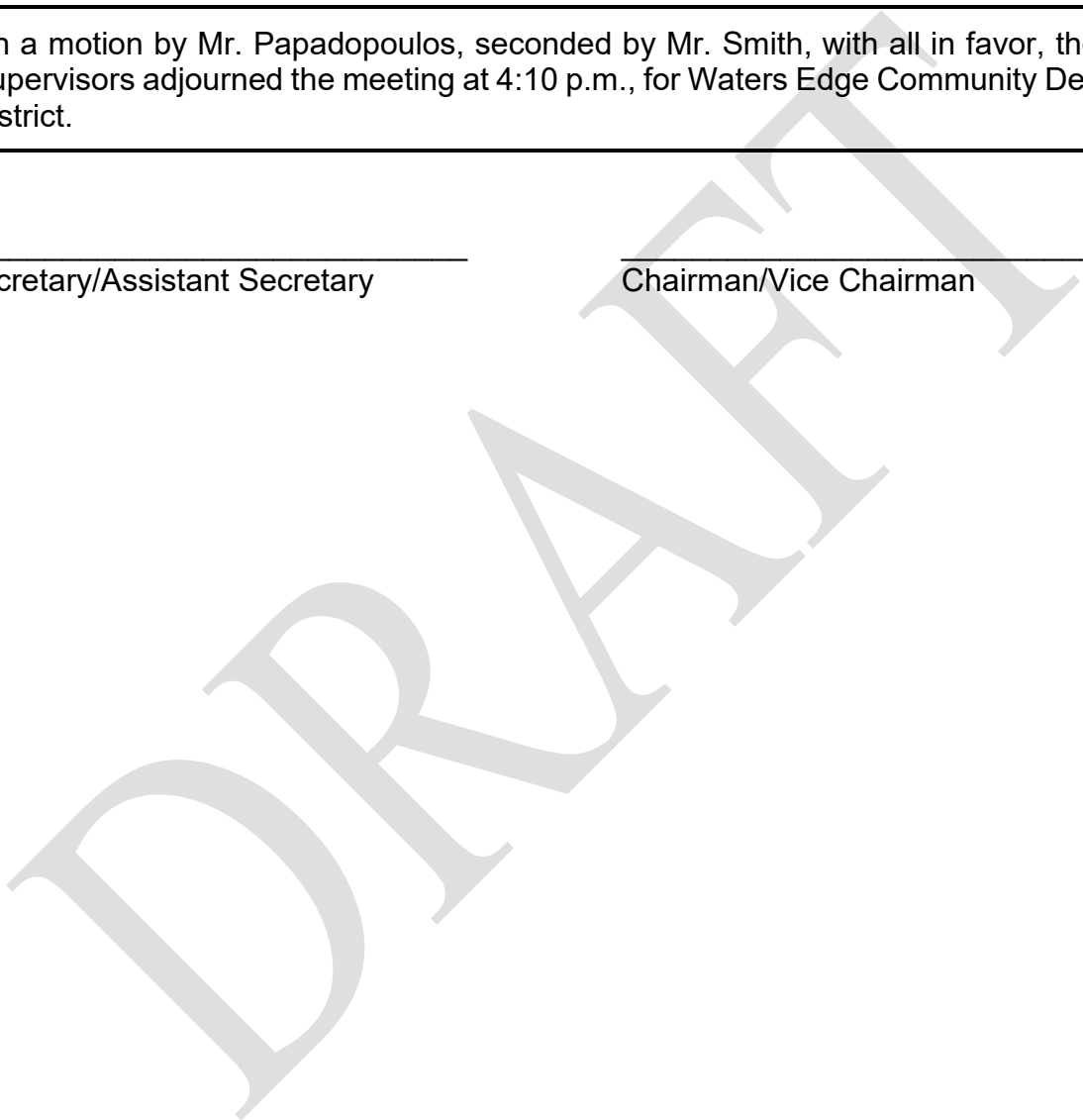
156
157 **THIRTEENTH ORDER OF BUSINESS** **Adjournment**

158

On a motion by Mr. Papadopoulos, seconded by Mr. Smith, with all in favor, the Board of Supervisors adjourned the meeting at 4:10 p.m., for Waters Edge Community Development District.

159
160
161
162

<hr/>	<hr/>
Secretary/Assistant Secretary	Chairman/Vice Chairman



Tab 9

Waters Edge Community Development District

District Office · Tampa, Florida · (813) 933-5771

Mailing Address · 3434 Colwell Avenue, Suite 200, Tampa · Florida 33614

www.watersedgecdd.org

Operations and Maintenance Expenditures

May 2026

For Board Approval

Attached please find the check register listing the Operation and Maintenance expenditures paid from May 1, 2026 through May 31, 2026. This does not include expenditures previously approved by the Board.

The total items being presented: **\$31,625.31**

Approval of Expenditures:

_____ Chairperson

_____ Vice Chairperson

_____ Assistant Secretary

Waters Edge Community Development District

Paid Operation & Maintenance Expenditures

May 1, 2026 Through May 31, 2026

<u>Vendor Name</u>	<u>Check Number</u>	<u>Invoice Number</u>	<u>Invoice Description</u>	<u>Invoice Amount</u>
Enumerate	300275	INV60744	Website Compliance & Management 05/26	\$ 217.25
GHS Environmental LLC	300276	2026-320	Irrigation Maintenance & Repair 04/26	\$ 150.00
Lee Electric, Inc.	300277	260210	Landscape Miscellaneous 05/26	\$ 340.00
Pasco County Utilities	20260504-1	24307520	Water Services 03/26	\$ 6,099.52
Rizzetta & Company, Inc.	300274	INV0000109145	Accounting Services 05/26	\$ 4,671.42
Sitex Aquatics, LLC	300278	11017-b	Lake Maintenance 05/26	\$ 2,250.55
Sprinkler Solutions of Florida, Inc.	300282	68557	Irrigation Repair 05/26	\$ 400.00
Sprinkler Solutions of Florida, Inc.	300284	68586	Irrigation Repair 05/26	\$ 400.00
Straley Robin Vericker	300281	28386	Legal Services 04/26	\$ 2,348.50
The Observer Group, Inc.	300283	26-01141P	Legal Advertising 05/26	\$ 78.75
Triple D Fencing	300279	4017	Miscellaneous Expense 05/26	\$ 8,000.00
U.S. Bank	300280	8161221	Trustee Fees S2015 04/01/26-03/31/27	\$ 4,148.38

Waters Edge Community Development District

Paid Operation & Maintenance Expenditures

May 1, 2026 Through May 31, 2026

<u>Vendor Name</u>	<u>Check Number</u>	<u>Invoice Number</u>	<u>Invoice Description</u>	<u>Invoice Amount</u>
Withlacoochee River Electric Cooperative, Inc.	20260508-1	2189378-042726	Electric Services 04/26	\$ 68.40
Withlacoochee River Electric Cooperative, Inc.	20260508-1	2189381-042726	Electric Services 04/26	\$ 106.06
Withlacoochee River Electric Cooperative, Inc.	20260508-1	2189382-042726	Electric Services 04/26	\$ 197.73
Withlacoochee River Electric Cooperative, Inc.	20260508-1	2189384-042726	Electric Services 04/26	<u>\$ 2,148.75</u>
Report Total				<u>\$ 31,625.31</u>

ENUMERATE

P.O. Box 952684
Atlanta GA 31192-2684
United States

Invoice

Invoice #: INV60744
Status: Open

Bill To

WatersEdge CDD
3434 COLWELL AVE.SUITE 200
Tampa FL 33614
United States

Date	Terms	Due Date
5/4/2026		5/4/2026

Item	Qty	Rate	Amount
Engage SMA Subscription Fee Service Period 5/4/2026 - 6/3/2026	1	\$217.25	\$217.25
Engage SMA Per Door Service Period 5/4/2026 - 6/3/2026	1	\$0.00	\$0.00

Subtotal	\$217.25
Tax Total (%)	\$0.00
Total	\$217.25
Amount Due	\$217.25



To pay by check, use remit address below:

Enumerate
PO Box 952684
ATLANTA GA 31192-2684

For billing inquires, please email: billingteam@goenumerate.com



www.ghsenvironmental.com
 P.O. Box 55802
 St Petersburg, FL 33732

Invoice

Date: 4/30/2026
 Invoice #: 2026-320

To:

Waters Edge CDD
 5844 Old Pasco Rd.
 Suite 100
 Wesley Chapel, FL 33544

Project: Waters Edge
 Proposal #: 13-124;2026
 P.O. #:

Due Date	Service Date:
5/30/2026	April 2026

Task #	Description	Project Compl...	Amount
Task 1	Monthly Meter Readings	33.33%	150.00

PAYMENT DUE WITHIN 30 DAYS OF INVOICING DATE	Total	\$150.00
Please make all checks payable to GHS Environmental There will be a 10% charge per month on any payments received after the initial 30 days. If you have any questions concerning this invoice please contact us at 727-667-6786. THANK YOU FOR YOUR BUSINESS!	Payments/Credits	\$0.00
	Balance Due	\$150.00



Water's Edge CDD
 Rizzetta & Company
 3434 Colwell Ave #200
 Tampa, FL 33614

(813) 994-1001
 LCastoria@rizzetta.com

JOB	#260210
SERVICE DATE	May 01, 2026
INVOICE DATE	May 01, 2026
PAYMENT TERMS	Upon receipt
DUE DATE	May 01, 2026
AMOUNT DUE	\$340.00

SERVICE ADDRESS

9019 Creedmoor Ln
 New Port Richey, FL 34654

CONTACT US

P.O. Box 270184
 Tampa, FL 33688

(813) 908-0035
 Luis@LeeElectricOnline.com

Service completed by: Pablo Davila

INVOICE

Services	qty	unit price	amount
Custom Services - Custom Job Commercial Repair landscape lighting. After the initial on-site visit, we found two transformers: one is working fine, and the other is not getting power. We recommend starting with troubleshooting to restore power to the faulty transformer and also mapping where the power from the other one is going.	1.0	\$0.00	\$0.00
Custom Services - Custom Job Commercial Slidel Entrance Troubleshoot no power to a transformer \$170-\$440, found the transformer it is being fed from the monument light but it is not putting power out. need to replace	1.0	\$170.00	\$170.00
Custom Services - Custom Job Commercial Slidel Entrance Troubleshoot/map wiring for low voltage lights for small island by the call box. \$170-\$440 Found a wiring all cut that need to be replaced to feed 3 low voltage lights.	1.0	\$170.00	\$170.00
Custom Services - Custom Job Commercial NOTE: During the second visit, we were informed that the community has two additional entrances, so we conducted a full evaluation. We will follow up with an estimate to help you make an informed decision regarding the safety and lighting issues. SLIDEL Entrance Full voltage light it has a broken support. There are five low voltage lights at the island with the monument That are controlled by a transformer that it is bad an improperly powered in. The smaller island by the call box, the transformer is working, but the wiring is broken and also the lights need to be replaced two of them on the exit side by the	1.0	\$0.00	\$0.00

Breakers for this entrance, not labeled recommend labeling the directory

for Internet box cover it is broken, Recommend replacing box.

Some extension cords where added by the gate motors. Either remove or properly add one

BELL HAVEN entrance

Have a transformer inside the community by the exit side that feeds three lights for the oak trees on the side of the road. The transformer it is bad.

There is another transformer by Moon lake Road on the exit side east and it's lighting up for oak trees 8 up lights
Transformer is buried recommend to lift it up
Tested the transformer is bad

The center Island has two transformers one it is working, is turning four color lights and the other transformer is not putting power out so needs to be replaced.

Sign light at the main entrance in the center island on the west side it is not working

West side the entrance side it has five low-voltage lights not working

Some extension cords where added by the gate motors. Either remove or properly add one

Provincetown Entrance

2 full voltage lights need to be replaced

Some extension cords where added by the gate motors. Either remove or properly add one
On the inside of the entrance, there are three lights that are not working and need troubleshooting.

At the monument there is one 120 V led need to be replaced.

Subtotal	\$340.00
Job Total	\$340.00
Amount Due	\$340.00

Thank you for the opportunity to service your electrical needs!

See our Terms & Conditions (<https://pro.housecallpro.com/LeeElectric/261873/terms>)



PASCO COUNTY UTILITIES
 CUSTOMER INFORMATION & SERVICES
 P.O. BOX 2139
 NEW PORT RICHEY, FL 34656-2139

LAND O' LAKES (813) 235-6012
 NEW PORT RICHEY (727) 847-8131
 DADE CITY (352) 521-4285

UtilCustServ@MyPasco.net
 Pay By Phone: 1-855-786-5344

1 0 1
 45-46024

WATERS EDGE CDD

Service Address: **9019 CREEDMOOR LANE RECLAIM**
 Bill Number: 24307520
 Billing Date: 4/13/2026
 Billing Period: 2/18/2026 to 3/20/2026

Account #	Customer #
1006710	01381392
Please use the 15-digit number below when making a payment through your bank	
100671001381392	

New Water, Sewer, Reclaim rates, fees, and charges took effect Oct. 1, 2025.
 Please visit bit.ly/pcurates for details.

Service	Meter #	Previous		Current		# of Days	Consumption in thousands
		Date	Read	Date	Read		
Reclaim	180194286	2/18/2026	529967	3/20/2026	542415	30	12448

Usage History

Month	Usage
March 2026	12448
February 2026	12447
January 2026	10217
December 2025	12570
November 2025	9605
October 2025	14603
September 2025	13369
August 2025	12087
July 2025	12160
June 2025	16094
May 2025	16344
April 2025	14951

Transactions

Previous Bill	6,099.03
Payment 03/30/26	-6,099.03 CR
Balance Forward	0.00
Current Transactions	
Reclaimed	
Reclaimed	12,448 Thousand Gals X \$0.49
Total Current Transactions	6,099.52
TOTAL BALANCE DUE	\$6,099.52

Please return this portion with payment

TO PAY ONLINE, VISIT pascoeasypay.pascocountyfl.net



Check this box if entering change of mailing address on back.

Account # 1006710
 Customer # 01381392
 Balance Forward 0.00
 Current Transactions 6,099.52

Total Balance Due	\$6,099.52
Due Date	4/30/2026

10% late fee will be applied if paid after due date

The Total Due will be electronically transferred on 04/30/2026.

WATERS EDGE CDD
 3434 COLWELL AVENUE SUITE 200
 TAMPA FL 33614-8390

PASCO COUNTY UTILITIES
 CUSTOMER INFORMATION & SERVICES
 P.O. BOX 2139
 NEW PORT RICHEY, FL 34656-2139

Rizzetta & Company, Inc.
 3434 Colwell Avenue
 Suite 200
 Tampa FL 33614

Invoice

Date	Invoice #
5/2/2026	INV0000109145

Bill To:

WATERS EDGE CDD - PC 3434 Colwell Avenue, Suite 200 Tampa FL 33614
--

Services for the month of	Terms	Client Number
May	Upon Receipt	00345

Description	Qty	Rate	Amount
Accounting Services	1.00	\$1,397.00	\$1,397.00
Administrative Services	1.00	\$443.00	\$443.00
Email Accounts, Admin & Maintenance	5.00	\$20.00	\$100.00
Financial & Revenue Collections	1.00	\$491.67	\$491.67
Management Services	1.00	\$2,139.75	\$2,139.75
Website Compliance & Management	1.00	\$100.00	\$100.00
		Subtotal	\$4,671.42
		Total	\$4,671.42

INVOICE

Sitex Aquatics, LLC
PO Box 917
Parrish, FL 34219

office@sitexaquatics.com
+1 (813) 564-2322



Bill to

Waters Edge CDD
3434 Colwell Ave, Ste 200
Tampa, FL 33614

Invoice details

Invoice no.: 11017-b
Terms: Net 30
Invoice date: 05/01/2026
Due date: 05/31/2026

#	Date	Product or service	Description	Qty	Rate	Amount
1.		Aquatic Maintenance	Monthly Lake Maintenance-52 Waterways	1	\$2,185.00	\$2,185.00
2.		Additional Services	Temporary Fuel Surcharge	1	\$65.55	\$65.55

Total **\$2,250.55**

Ways to pay

BANK

[View and pay](#)



Sprinkler Solutions of Florida

License #: SCC131152611
401 N. Parsons Ave Suite 106-A
Brandon, FL 33510
813-503-1228
admin@ssofla.com

Invoice #68557

INVOICED

WatersEdge CDD
(813) 933-5571
11249 Shelter Cove Loop
New Port Richey, Florida 34654

Job Title: Water Meter Removal
Job Location: 11249 Shelter Cove Loop
Job Location Address: 11249 Shelter
Cove Loop New Port Richey, Florida
34654
Job Members: Mike Powers

Invoiced Date: May 14, 2026
Due Date: May 24, 2026
Status: Invoiced
Date of Service: May 13, 2026

Notes:

2023F350DRW
Mike P

Arrived at 11249 Shelter Cove and found a leak in the meter box. The male adapter was cracked through at the threads. There was an existing slip fix I removed that was also leaking. After all the old pipe and fittings were cut out, I installed new PVC pipe and fittings with the meter removed.

Water Meter Removal

11249 Shelter Cove Loop, 9250 Edistro

Item

Waters Edge CDD Meter Removal

11249 Shelter Cove Loop

Waters Edge CDD Meter Removal

9250 Edistro

Thank you for your business!

Total

\$400.00

Amount Paid	\$0.00
Amount Due	\$400.00



Sprinkler Solutions of Florida

License #: SCC131152611
401 N. Parsons Ave Suite 106-A
Brandon, FL 33510
813-503-1228
admin@ssofla.com

Invoice 68586

INVOICED

WatersEdge CDD
(813) 933-5571

Job Title: Meter Removal
Job Members: Mike Powers

Invoiced Date: May 19, 2026
Due Date: May 29, 2026
Status: Invoiced
Date of Service: May 19, 2026

Notes:

Water Meters have been removed and piping repaired with PVC pipe/fittings.

Water Meter Removal

11451 Bathgate and 11436 Biddeford St

Item

Waters Edge CDD Meter Removal

Removal of clogged water meters and install new pipe

Waters Edge CDD Meter Removal

Removal of clogged water meters and install new pipe

Thank you for your business!

Total	\$400.00
Amount Paid	\$0.00
Amount Due	\$400.00

Straley Robin Vericker

1510 W. Cleveland Street

Tampa, FL 33606

Telephone (813) 223-9400

Federal Tax Id. - 20-1778458

Waters Edge CDD
P.O. Box 32414
Charlotte, NC 28232

May 12, 2026

Client: 001219

Matter: 000001

Invoice #: 28386

Page: 1

RE: GENERAL

For Professional Services Rendered Through April 30, 2026

SERVICES

Date	Person	Description of Services	Hours	Amount
4/2/2026	MB	REVIEW AND RESPOND TO EMAIL FROM DISTRICT MANAGER REGARDING TEMPORARY RECLAIMED WATER POLICY.	0.4	\$122.00
4/6/2026	MB	REVIEW AND RESPOND TO EMAIL FROM DISTRICT MANAGER REGARDING TEMPORARY RECLAIMED WATER POLICY; REVIEW SWFWMD PHASE III ORDER WATER RESTRICTIONS AND PASCO COUNTY RECLAIMED WATERING POLICY.	0.9	\$274.50
4/13/2026	MB	REVIEW AND RESPOND TO EMAIL CORRESPONDENCE FROM DISTRICT MANAGER REGARDING SITEX ADDENDUM; REVIEW AQUATIC MAINTNENACE AGREEMENT WITH SITEX.	0.6	\$183.00
4/17/2026	MB	REVIEW AND RESPOND TO EMAIL CORRESPONDENCE FROM DISTRICT MANAGER REGARDING SITEX ADDENDUM AND TEMPORARY RECLAIMED WATER POLICY; REVIEW SITEX AQUATIC AGREEMENT 2025.	0.9	\$274.50
4/21/2026	MB	REVIEW AQUATIC MANAGEMENT AGREEMENT WITH SITEX FROM 11/27/2025; PREPARE MASTER AQUATIC MANAGEMENT AGREEMENT WITH SITEX AND ADDENDUM NO. 1 TO THE MASTER AGREEMENT REGARDING THE TEMPORARY FUEL CHARGE WITH SITEX.	1.6	\$488.00
4/23/2026	MB	ATTENDANCE AT DISTRICT BOARD MEETING.	1.3	\$396.50
4/28/2026	MB	REVIEW EMAIL CORRESPONDENCE FROM DISTRICT MANAGER REGARDING FENCING AGREEMENT; CONFERENCE CALL WITH DISTRICT MANAGER REGARDING FENCING AGREEMENT.	0.6	\$183.00

SERVICES

Date	Person	Description of Services	Hours	Amount
4/29/2026	MB	REVIEW VENDOR EMAIL CORRESPONDENCE, PROPOSAL AND CORPORATE INFORMATION; PREPARE FENCE INSTALLATION SERVICES AGREEMENT WITH TRIPLE D FENCING; REVIEW EMAIL CORRESPONDENCE FROM DISTRICT MANAGER AND VENDOR REGARDING POND TRASH PICK UP; REVIEW AND REVISE AQUATIC MANAGEMENT AGREEMENT WITH SITEX AGREEMENT.	1.4	\$427.00
Total Professional Services			7.7	\$2,348.50
Total Services				\$2,348.50
Total Disbursements				\$0.00
Total Current Charges				\$2,348.50
Previous Balance				\$3,160.74
<i>Less Payments</i>				(\$3,160.74)
PAY THIS AMOUNT				\$2,348.50

Please Include Invoice Number on all Correspondence

Business Observer

1970 Main Street
3rd Floor
Sarasota, FL 34236
, 941-906-9386 x322

INVOICE

Legal Advertising

Invoice # 26-01141P

Date 05/15/2026

Attn:
Waters Edge CDD Rizzetta
3434 COLWELL AVENUE SUITE 200
TAMPA FL 33614

Please make checks payable to:
(Please note Invoice # on check)
Business Observer
1970 Main Street
3rd Floor
Sarasota, FL 34236

Description

Amount

Serial # 26-01141P

Notice of Qualifying Period for Candidates

RE: Waters Edge CDD

Published: 5/15/2026

\$78.75

Important Message

Please include our Serial # on your check
Pay by credit card online:
<https://legals.businessobserverfl.com/send-payment/>

Paid

()

Total

\$78.75

Payment is due within 30 days of the 1st publication date of your notice. if payment is not made, affidavits may be held

Attention: If you are a government agency and you believe that you qualify for a 15% discount to the second insertion of your notice per F.S. revision 50.061, please inform Kristen Boothroyd directly at 941-906-9386 x323.

NOTICE

The Business Observer makes every effort to ensure that its public notice advertising is accurate and in full compliance with all applicable statutes and ordinances and that its information is correct. Nevertheless, we ask that our advertisers scrutinize published ads carefully and alert us immediately to any errors so that we may correct them as soon as possible. We cannot accept responsibility for mistakes beyond bearing the cost of republishing advertisements that contain errors.

Business Observer

1970 Main Street
3rd Floor
Sarasota, FL 34236
, 941-906-9386 x322

INVOICE

Legal Advertising

NOTICE OF QUALIFYING PERIOD FOR CANDIDATES FOR THE BOARD OF SUPERVISORS OF THE WATERS EDGE COMMUNITY DEVELOPMENT DISTRICT

Notice is hereby given that the qualifying period for candidates for seats on the Board of Supervisors of the Waters Edge Community Development District (the "District") will commence at noon on **Monday June 8, 2026 and close at noon on Friday June 12, 2026**. Candidates may qualify for the office of board member of the District with the Pasco County Supervisor of Elections by mail to the Honorable Brian E. Corley, Supervisor of Elections, Post Office Box 300, Dade City, Florida 33526-0300, or in person at the following office locations:

East Pasco Government Center
14236 6th Street, Suite 200
Dade City, FL 33526
Telephone: (352) 521-4302

Central Pasco Professional Center
4111 Land O'Lakes Blvd., Room 105
Land O'Lakes, FL 34639
Telephone: (813) 929-2788

Liberty Building
8606 Government Drive, Suite 1
New Port Richey, FL 34654
Telephone: (727) 847-8162

All candidates shall qualify for individual seats in accordance with Section 99.061, Florida Statutes, and must also be a qualified elector of the District. A qualified elector is any person at least 18 years of age who is a citizen of the United States, a legal resident of the State of Florida and of the District, and who is registered to vote with the Pasco County Supervisor of Elections. Campaigns shall be conducted in accordance with Chapter 106, Florida Statutes.

The District has two (2) seats up for election, specifically **seats 1 and 5**. Each seat carries a four-year term of office. Elections are nonpartisan and will be held at the same time as the general election on November 3, 2026, in the manner prescribed by law for general elections.

Please note that information in this notice is subject to change. For the latest information and additional information, please contact the office of the Pasco County Supervisor of Elections or visit their website at www.pascovotes.gov.

May 15, 2026

26-01141P

Attention: If you are a government agency and you believe that you qualify for a 15% discount to the second insertion of your notice per F.S. revision 50.061, please inform Kristen Boothroyd directly at 941-906-9386 x323.

NOTICE

The Business Observer makes every effort to ensure that its public notice advertising is accurate and in full compliance with all applicable statutes and ordinances and that its information is correct. Nevertheless, we ask that our advertisers scrutinize published ads carefully and alert us immediately to any errors so that we may correct them as soon as possible. We cannot accept responsibility for mistakes beyond bearing the cost of republishing advertisements that contain errors.

Triple D Fencing

1615 6th St SE Ruskin, FL 33570

Office:352-257-3086

BILL TO

Waters Edge CDD

9142 Creedmoor Ln.

New Port Richey, FL

INVOICE

Invoice # 4017

Invoice Date

5-4-26

Due Date

5-4-26

DESCRIPTION	QUANTITY	PRICE	TOTAL
Pond Fencing Deposir 2nd Portion			\$8.000.00

Subtotal	
Tax	
TOTAL DUE	\$8.000.00

AVAILABLE PAYMENT OPTIONS:

Cash Check Square (3.5% fee added)

Venmo CashApp Apple Pay

Owner Approval: *Donald Buzbee*

Thank you!



Corporate Trust Services
EP-MN-WN3L
60 Livingston Ave.
St. Paul, MN 55107

Invoice Number:
Account Number:
Invoice Date:
Direct Inquiries To:
Phone:

8161221
272890000
04/24/2026
Duffy, Leanne M
(407)-835-3807

Waters Edge Community Developmt Dist
ATTN District Manager
3434 Colwell Ave Ste 200
Tampa, FL 33614
United States

WATERS EDGE CDD 2015

The following is a statement of transactions pertaining to your account. For further information, please review the attached.

STATEMENT SUMMARY

PLEASE REMIT BOTTOM COUPON PORTION OF THIS PAGE WITH CHECK PAYMENT OF INVOICE.

TOTAL AMOUNT DUE **\$4,148.38**

All invoices are due upon receipt.

Please detach at perforation and return bottom portion of the statement with your check, payable to U.S. Bank.

WATERS EDGE CDD 2015

Invoice Number:	8161221
Account Number:	272890000
Current Due:	\$4,148.38
Direct Inquiries To:	Duffy, Leanne M
Phone:	(407)-835-3807

Please mail payments to:
U.S. Bank
CM-9690
PO BOX 70870
St. Paul, MN 55170-9690





Corporate Trust Services
 EP-MN-WN3L
 60 Livingston Ave.
 St. Paul, MN 55107

Invoice Number: 8161221
 Invoice Date: 04/24/2026
 Account Number: 272890000
 Direct Inquiries To: Duffy, Leanne M
 Phone: (407)-835-3807

WATERS EDGE CDD 2015

Accounts Included	272890000	272890001	272890002	272890003	272890004	272890005
In This Relationship:	272890006	272890007	272890008			

CURRENT CHARGES SUMMARIZED FOR ENTIRE RELATIONSHIP

Detail of Current Charges	Volume	Rate	Portion of Year	Total Fees
04200 Trustee	1.00	3,850.00	100.00%	\$3,850.00
Subtotal Administration Fees - In Advance 04/01/2026 - 03/31/2027				\$3,850.00
Incidental Expenses 04/01/2026 to 03/31/2027	3,850.00	0.0775		\$298.38
Subtotal Incidental Expenses				\$298.38
TOTAL AMOUNT DUE				\$4,148.38



**WITHLACOOCHEE RIVER ELECTRIC
COOPERATIVE, INC.**

Your Touchstone Energy® Cooperative
P.O. Box 278 • Dade City, Florida 33526-0278

Account Number **2189378** Cycle **17**
 Meter Number **40547871**
 Customer Number **20096167**
 Customer Name **WATERS EDGE CDD**

Bill Date **04/27/2026**
 Amount Due **68.40**
 Current Charges Due **05/20/2026**

District Office Serving You
Bayonet Point

See Reverse Side For More Information

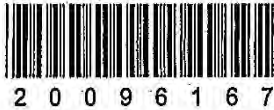
Service Address **11909 SLIDELL ST**
 Service Description **PUMP**
 Service Classification **General Service Non-Demand**

ELECTRIC SERVICE							
From		To		Multiplier	Dem. Reading	KW Demand	KWh Used
Date	Reading	Date	Reading				
03/20	88724	04/22	88987				263

Comparative Usage Information		
Average kWh		
Period	Days	Per Day
Apr 2026	33	8
Mar 2026	28	8
Apr 2025	31	9

**BILLS ARE DUE
WHEN RENDERED**
 A 1.5 percent, but not
 less than \$5, late charge
 will apply to unpaid
 balances as of 5:00 p.m.
 on the due date shown
 on this bill.

Previous Balance **65.07**
 Payment **65.07CR**
 Balance Forward **0.00**



Customer Charge **39.16**
 Energy Charge 263 KWH @ 0.06090 **16.02**
 Fuel Adjustment 263 KWH @ 0.04375 **11.51**
 FL Gross Receipts Tax **1.71**

Total Current Charges **68.40**
 Total Due **68.40** E.F.T.

You have 24-hour access to manage your account on-line through Smarthub at www.wrec.net. If you would like to make a payment using your credit card, please call 855-938-3431. This number is WREC's Secure Pay-By-Phone system.

***** ATTENTION *****

The 2025 Capital Credits assigned amount for this account is \$96.76. These credits are not refundable at this time nor can they be applied toward the balance owed.

Capital Credits will be refunded as approved by the Cooperative's Board of Trustees and in compliance of our mortgage agreement with the United States Government.

DO NOT PAY
 Total amount will be electronically transferred on or after 05/08/2026.

**WITHLACOOCHEE RIVER ELECTRIC
COOPERATIVE, INC.**

Your Touchstone Energy® Cooperative
P.O. Box 278 • Dade City, Florida 33526-0278

Please Detach and Return This Portion With
Your Payment To Ensure Accurate Posting.

See Reverse Side For Mailing Instructions

Bill Date: 04/27/2026

Use above space for address change ONLY.

District: BP17



2189378 BP17
 WATERS EDGE CDD
 C/O RIZZETTA & COMPANY
 PO BOX 32414
 CHARLOTTE NC 28232-2414

Electronic Funds Transfer on or after 05/08/2026	
TOTAL CHARGES DUE	68.40
DO NOT PAY	



000218937800000684000000684002

Account Number **2189381** Cycle 17
 Meter Number 62225547
 Customer Number 20096167
 Customer Name **WATERS EDGE CDD**

Bill Date **04/27/2026**
 Amount Due **106.06**
 Current Charges Due **05/20/2026**

District Office Serving You
Bayonet Point

See Reverse Side For More Information

Service Address 11406 BELLE HAVEN DR
 Service Description WELL
 Service Classification General Service Non-Demand

ELECTRIC SERVICE							
From Date	Reading	To Date	Reading	Multiplier	Dem. Reading	KW Demand	kWh Used
03/20	28676	04/22	29290				614

Comparative Usage Information

Period	Days	Per Day
Apr 2026	33	19
Mar 2026	28	16
Apr 2025	31	1

BILLS ARE DUE WHEN RENDERED
 A 1.5 percent, but not less than \$5, late charge will apply to unpaid balances as of 5:00 p.m. on the due date shown on this bill.

Previous Balance **86.81**
 Payment **86.81CR**
 Balance Forward **0.00**

MAY - 1 2026

Customer Charge **39.16**
 Energy Charge 614 KWH @ 0.06090 **37.39**
 Fuel Adjustment 614 KWH @ 0.04375 **26.86**
 FL Gross Receipts Tax **2.65**

Total Current Charges **106.06**
 Total Due **106.06** E.F.T.



2 0 0 9 6 1 6 7

You have 24-hour access to manage your account on-line through Smarthub at www.wrec.net. If you would like to make a payment using your credit card, please call 855-938-3431. This number is WREC's Secure Pay-By-Phone system.

***** ATTENTION *****

The 2025 Capital Credits assigned amount for this account is \$168.54. These credits are not refundable at this time nor can they be applied toward the balance owed.

Capital Credits will be refunded as approved by the Cooperative's Board of Trustees and in compliance of our mortgage agreement with the United States Government.

DO NOT PAY

Total amount will be electronically transferred on or after 05/08/2026.



Account Number **2189382** Cycle **17**
 Meter Number 62225594
 Customer Number 20096167
 Customer Name **WATERS EDGE CDD**

Bill Date **04/27/2026**
 Amount Due **197.73**
 Current Charges Due **05/20/2026**

District Office Serving You
Bayonet Point

See Reverse Side For More Information

Service Address 11430 BIDDEFORD PL
 Service Description WELL
 Service Classification General Service Non-Demand

ELECTRIC SERVICE

From		To		Multiplier	Dem. Reading	KW Demand	kWh Used
Date	Reading	Date	Reading				
03/20	23025	04/22	24493				1468

Comparative Usage Information

Period	Days	Per Day
Apr 2026	33	44
Mar 2026	28	50
Apr 2025	31	1

BILLS ARE DUE WHEN RENDERED
 A 1.5 percent, but not less than \$5, late charge will apply to unpaid balances as of 5:00 p.m. on the due date shown on this bill.



2 0 0 9 6 1 6 7

You have 24-hour access to manage your account on-line through Smarthub at www.wrec.net. If you would like to make a payment using your credit card, please call 855-938-3431. This number is WREC's Secure Pay-By-Phone system.

***** ATTENTION *****

The 2025 Capital Credits assigned amount for this account is \$101.08. These credits are not refundable at this time nor can they be applied toward the balance owed.

Capital Credits will be refunded as approved by the Cooperative's Board of Trustees and in compliance of our mortgage agreement with the United States Government.

Previous Balance 188.97
 Payment 188.97CR
 Balance Forward 0.00

MAY - 1 2026

Customer Charge 39.16
 Energy Charge 1,468 KWH @ 0.06090 89.40
 Fuel Adjustment 1,468 KWH @ 0.04375 64.23
 FL Gross Receipts Tax 4.94

Total Current Charges 197.73
 Total Due **E.F.T.** 197.73

DO NOT PAY

Total amount will be electronically transferred on or after 05/08/2026.

**WITHLACOOCHEE RIVER ELECTRIC
COOPERATIVE, INC.**

Your Touchstone Energy® Cooperative
P.O. Box 278 • Dade City, Florida 33526-0278

Account Number **2189384** Cycle **17**
 Meter Number **49382988**
 Customer Number **20096167**
 Customer Name **WATERS EDGE CDD**

Bill Date **04/27/2026**
 Amount Due **2,148.75**
 Current Charges Due **05/20/2026**

District Office Serving You
Bayonet Point

See Reverse Side For More Information

Service Address **9136 CREEDMOOR LN**
 Service Description **WELL**
 Service Classification **General Service Demand**

ELECTRIC SERVICE									
From			To						
Date	Reading		Date	Reading	Multiplier	Dem. Reading	KW Demand	KWh Used	
03/20	98451		04/22	16792		96.96	97	18341	

Comparative Usage Information
Average kWh

Period	Days	Per Day
Apr 2026	33	556
Mar 2026	28	555
Apr 2025	31	482

**BILLS ARE DUE
WHEN RENDERED**
 A 1.5 percent, but not
 less than \$5, late charge
 will apply to unpaid
 balances as of 5:00 p.m.
 on the due date shown
 on this bill.

Previous Balance **1,899.65**
 Payment **1,899.65CR**
 Balance Forward **0.00**



Customer Charge **44.16**
 Demand Charge 97 KW @ 6.65000 **645.05**
 Energy Charge 18,341 KWH @ 0.03290 **603.42**
 Fuel Adjustment 18,341 KWH @ 0.04375 **802.42**
 FL Gross Receipts Tax **53.70**

You have 24-hour access to manage your account on-line through Smarthub at www.wrec.net. If you would like to make a payment using your credit card, please call 855-938-3431. This number is WREC's Secure Pay-By-Phone system.

Total Current Charges **2,148.75**
 Total Due **2,148.75** E.F.T.

***** ATTENTION *****

The 2025 Capital Credits assigned amount for this account is \$2,328.96. These credits are not refundable at this time nor can they be applied toward the balance owed.

Capital Credits will be refunded as approved by the Cooperative's Board of Trustees and in compliance of our mortgage agreement with the United States Government.

DO NOT PAY
 Total amount will be electronically transferred on or after 05/08/2026.

**WITHLACOOCHEE RIVER ELECTRIC
COOPERATIVE, INC.**

Your Touchstone Energy® Cooperative
P.O. Box 278 • Dade City, Florida 33526-0278

Please Detach and Return This Portion With
Your Payment To Ensure Accurate Posting.

See Reverse Side For Mailing Instructions

Bill Date: **04/27/2026**

Use above space for address change ONLY.

District: BP17



2189384 **BP17**
 WATERS EDGE CDD
 C/O RIZZETTA & COMPANY
 PO BOX 32414
 CHARLOTTE NC 28232-2414

Electronic Funds Transfer on or after 05/08/2026	
TOTAL CHARGES DUE	2,148.75
DO NOT PAY	